

2013 APSI English Literature & Composition Syllabus for New AP Teachers July 22 – 25, 2013

Institute Overview

We will begin our session with a full review and analysis of the exam itself, and consider strategies that help our students prepare for both the essay responses and the multiple-choice section. We will discuss “backward design,” “test preparation,” and “teaching to the test.” We will review sample essays from the AP Readings, conduct practice readings and discussions, and practice analyzing and constructing part-one questions, spending part of our time placing ourselves in the position of our students. We will practice effective classroom lessons designed to promote close critical reading

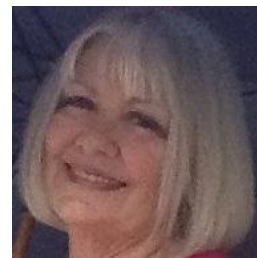
In addition to the AP exam and program, we will address such topics as student selection processes, the College Board policy of equity and access, selection of appropriate texts, the maintenance and expansion of the literary canon, the frequency and extent of composition and revision, the promotion of clear and cogent writing, the development of voice, interdisciplinary instruction, summer reading programs, and others that you wish to address.

I will assign a few short readings of imaginative literature during the week. I have selected pieces that we should find interesting and worthwhile.

Our objective for the week is that participants leave the session refreshed and prepared to return with enthusiasm to their students, who will be the chief beneficiaries of our work together this summer. Please feel free to contact me with your concerns, especially if there are topics of particular interest to you. I look forward to a stimulating, fun, and productive week!

Consultant Background

Gretchen Polnac taught AP literature and film for 31 years in the Austin Independent School District in Austin, Texas, where she received numerous teaching awards. She now teaches full time at The University of Texas in UTeach Liberal Arts, guiding pre-service teachers through their professional sequence of methods courses. Gretchen’s undergraduate work was completed at The University of Texas and her graduate work at Texas State University and The University of Texas. She is a consultant for both AP Literature and Language and reads the literature exam. In January 2010, Gretchen participated in *The Professor’s Study Tour with The Anti-Defamation League Echoes and Reflections Program* in Israel. In January 2012, Gretchen trained teachers and students in Hawaii on AP strategies.



Institute Preparation

To prepare for our session I ask that you visit the home page for AP English Literature and Composition on the College Board website <www.collegeboard.com/apcentral>, and familiarize yourself with the online materials you find there. Teachers should bring the following to the institute:

- ✓ A copy of their current syllabus
- ✓ A piece (or pieces) of fiction with which they can construct meaningful lessons
- ✓ An unit plan that they want to rework

***The goal is for teachers to have TIME to improve their practices and assignments.

Institute Schedule

Please note that the following agenda is tentative; an effective facilitator will address the needs and desires of the participants and we will proceed accordingly.

Monday

- AP Handbook (in depth)
- 2013 AP Literature Test deconstruction
- Close Reading

Tuesday

- Prose: short cuttings
- Prose: short stories

Wednesday

- Poetry (In depth look at selected canonical poets)
- Poetry (modern influences)

Thursday

- The Open Question: Longer pieces of imaginative literature
- Sharing Best Practices

Graduate Credit Option

Participants may also earn three graduate education hours for any of the AP Summer Institutes from Washburn University for a reduced tuition and the successful completion of an academic assignment.

Additional Information

Timothy W. Peterson, Ph.D.
Dean of Academic Outreach
Washburn University
1700 College Avenue
Topeka, KS 66621

tim.peterson@washburn.edu

(785) 670-1399 voice

(785) 670-1028 fax