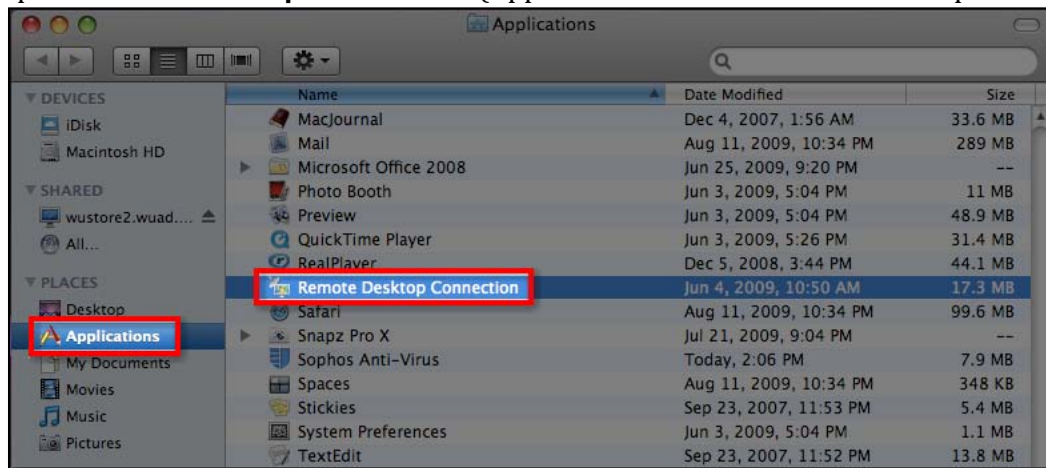
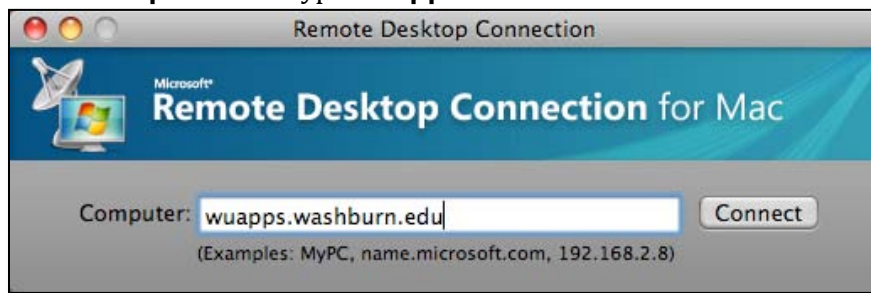


# CONNECTING TO WUAPPS USING A MAC OS

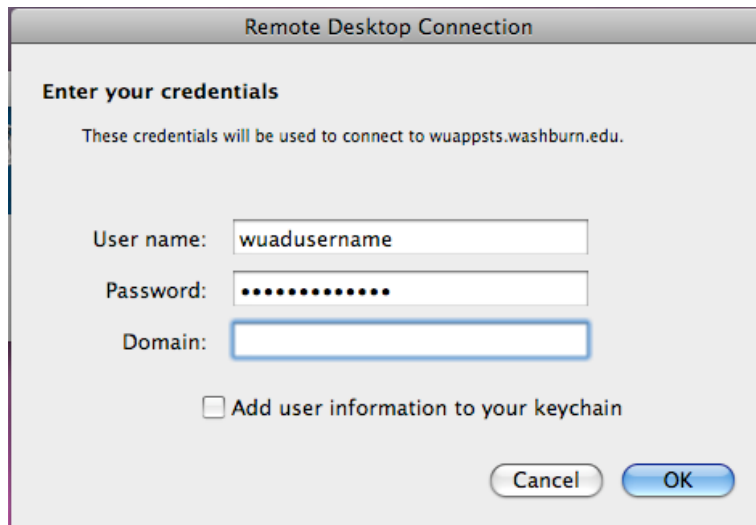
1. Open **Remote Desktop Connection** (Applications Folder > Remote Desktop Connection)



2. In the **Computer** field type **wuapps.washburn.edu** and click the **Connect** button.

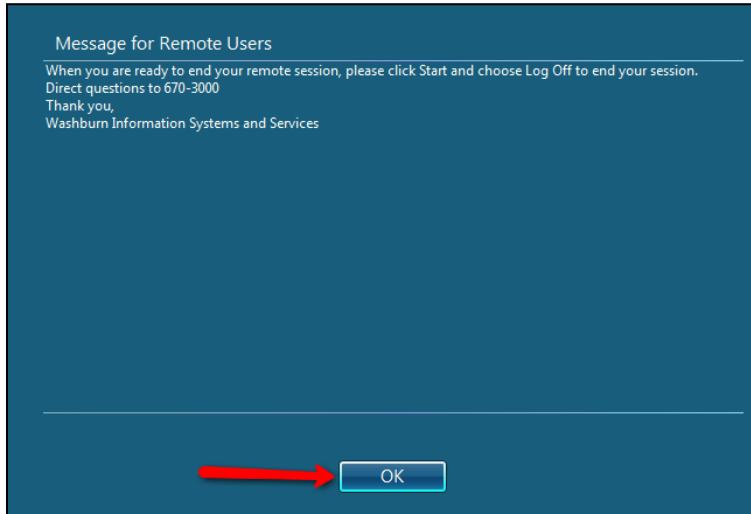


3. Enter your **WUAD** username and password, delete anything in the **Domain** field, and click the **OK** button.

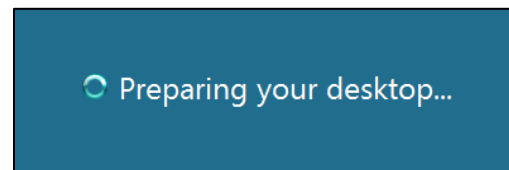
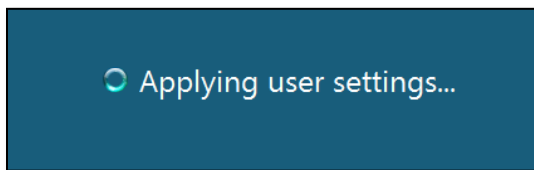


## Connecting to WUAPPS Using a Mac OS

4. A new window will appear. Inside that window, click the **OK** button on the **Message for Remote Users**.



5. Messages will appear to show your profile is being loaded and applied. After they disappear, you are in WUAPPS.



6. To exit WUAPPS, **do not** just close the window. **Log off the system** (Start > Arrow next to Lock > Log Off).

