

**Table 1
Washburn University
Enrollment Summary
Spring 2018**

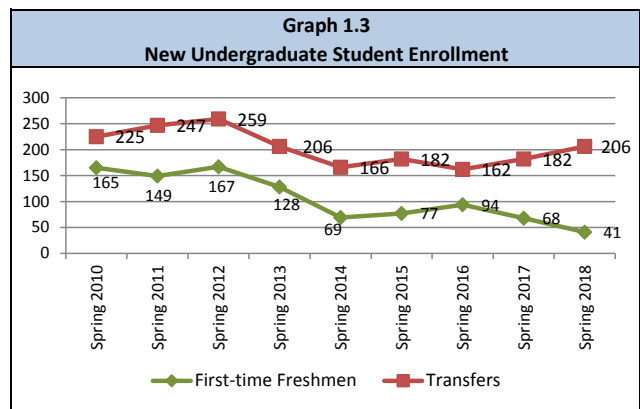
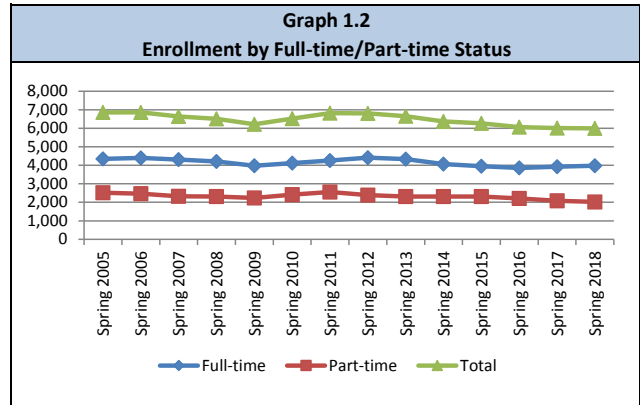
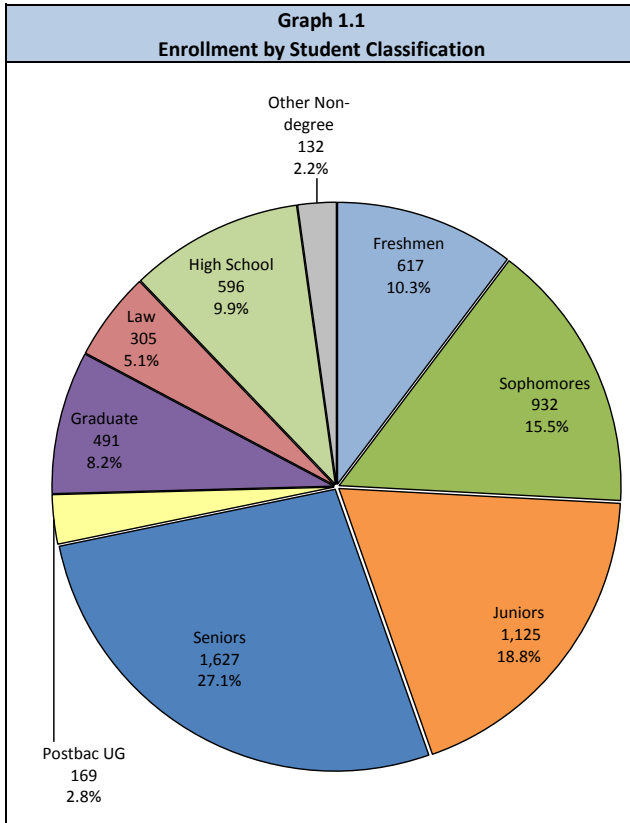
	<u>Spring 2018</u>		<u>Spring 2017</u>		<u>Change</u>	
					<u>N</u>	<u>%</u>
Total Headcount	5,994		6,008		-14	-0.2%
Total Student Credit Hours	65,853		65,346		507	0.8%
Total FTE	4,625		4,607		18	0.4%
Headcount by Student Level & Classification						
Freshmen	617	10.3%	679	11.3%	-62	-9.1%
Sophomores	932	15.5%	882	14.7%	50	5.7%
Juniors	1,125	18.8%	1,093	18.2%	32	2.9%
Seniors	1,627	27.1%	1,643	27.3%	-16	-1.0%
Postbaccalaureate undergraduate	169	2.8%	170	2.8%	-1	-0.6%
<i>Subtotal undergraduate</i>	<i>4,470</i>	<i>74.6%</i>	<i>4,467</i>	<i>74.4%</i>	<i>3</i>	<i>0.1%</i>
Master's	423	7.1%	484	8.1%	-61	-12.6%
Doctorate	68	1.1%	49	0.8%	19	38.8%
<i>Subtotal graduate</i>	<i>491</i>	<i>8.2%</i>	<i>533</i>	<i>8.9%</i>	<i>-42</i>	<i>-7.9%</i>
Law	305	5.1%	304	5.1%	1	0.3%
<i>Subtotal degree-seeking</i>	<i>5,266</i>	<i>87.9%</i>	<i>5,304</i>	<i>88.3%</i>	<i>-38</i>	<i>-0.7%</i>
High School	596	9.9%	551	9.2%	45	8.2%
Other non-degree seeking	132	2.2%	153	2.5%	-21	-13.7%
<i>Subtotal non-degree seeking</i>	<i>728</i>	<i>12.1%</i>	<i>704</i>	<i>11.7%</i>	<i>24</i>	<i>3.4%</i>
Total Headcount	5,994	100.0%	6,008	100.0%	-14	-0.2%
Headcount by Gender						
Male	2,404	40.1%	2,408	40.1%	-4	-0.2%
Female	3,590	59.9%	3,600	59.9%	-10	-0.3%
Total Headcount	5,994	100.0%	6,008	100.0%	-14	-0.2%
Headcount by Resident/Nonresident						
Kansas resident	5,228	87.2%	5,235	87.1%	-7	-0.1%
Nonresident	766	12.8%	773	12.9%	-7	-0.9%
Total Headcount	5,994	100.0%	6,008	100.0%	-14	-0.2%
Headcount by Full-time/Part-time						
Full-time	3,971	66.2%	3,929	65.4%	42	1.1%
Part-time	2,023	33.8%	2,079	34.6%	-56	-2.7%
Total Headcount	5,994	100.0%	6,008	100.0%	-14	-0.2%
60 & Over Tuition-free Audit Program^[1]						
Headcount	240		232		8	3.4%
Student Credit Hours	842		859		-17	-2.0%
Average Credit Hour Load						
Undergraduate	12.2		12.0			
Graduate	7.4		7.5			
Law	14.3		14.4			
Non-degree seeking	4.3		4.7			

Source: Enrollment census files; February 10, 2017, February 12, 2016.

Table 2
Washburn University
Enrollment Summary
Spring 2018 Compared to Fall 2017

	Spring 2018		Fall 2017		Change	
	N	%	N	%	N	%
Total Headcount	5,994		6,691		-697	-10.4%
Total Student Credit Hours	65,853		73,404		-7,552	-10.3%
Total FTE	4,625		5,132		-507	-9.9%
Headcount by Student Level & Classification						
Freshmen	617	10.3%	1141	17.1%	-524	-45.9%
Sophomores	932	15.5%	917	13.7%	15	1.6%
Juniors	1,125	18.8%	1,181	17.7%	-56	-4.7%
Seniors	1,627	27.1%	1,519	22.7%	108	7.1%
Postbaccalaureate undergraduate	169	2.8%	168	2.5%	1	0.6%
<i>Subtotal undergraduate</i>	<i>4,470</i>	<i>74.6%</i>	<i>4,926</i>	<i>73.6%</i>	<i>-456</i>	<i>-9.3%</i>
Master's	423	7.1%	440	6.6%	-17	-3.9%
Doctorate	68	1.1%	71	1.1%	-3	-4.2%
<i>Subtotal graduate</i>	<i>491</i>	<i>8.2%</i>	<i>511</i>	<i>7.6%</i>	<i>-20</i>	<i>-3.9%</i>
Law	305	5.1%	307	4.6%	-2	-0.7%
<i>Subtotal degree-seeking</i>	<i>5,266</i>	<i>87.9%</i>	<i>5,744</i>	<i>85.8%</i>	<i>-478</i>	<i>-8.3%</i>
High School	596	9.9%	830	12.4%	-234	-28.2%
Other non-degree seeking	132	2.2%	117	1.7%	15	12.8%
<i>Subtotal non-degree seeking</i>	<i>728</i>	<i>12.1%</i>	<i>947</i>	<i>14.2%</i>	<i>-219</i>	<i>-23.1%</i>
Total Headcount	5,994	100.0%	6,691	100.0%	-697	-10.4%
Headcount by Gender						
Male	2,404	40.1%	2,668	39.9%	-264	-9.9%
Female	3,590	59.9%	4,023	60.1%	-433	-10.8%
Total Headcount	5,994	100.0%	6,691	100.0%	-697	-10.4%
Headcount by Resident/Nonresident						
Kansas resident	5,228	87.2%	5,882	87.9%	-654	-11.1%
Nonresident	766	12.8%	809	12.1%	-43	-5.3%
Total Headcount	5,994	100.0%	6,691	100.0%	-697	-10.4%
Headcount by Full-time/Part-time						
Full-time	3,971	66.2%	4,463	66.7%	-492	-11.0%
Part-time	2,023	33.8%	2,228	33.3%	-205	-9.2%
Total Headcount	5,994	100.0%	6,691	100.0%	-697	-10.4%
60 & Over Tuition-free Audit Program						
Headcount	240		240		0	0.0%
Student Credit Hours	842		856		-14	-1.6%
Average Credit Hour Load						
Undergraduate	12.2		12.3			
Graduate	7.4		7.4			
Law	14.3		13.9			
Non-degree seeking	4.3		5.1			

**Graph 1
Washburn University
Headcount Enrollment
Spring 2018**



Source: Enrollment census file

Table 3
Headcount Enrollment and Student Credit Hours
Spring 1970 to Spring 2018

<u>Spring Semester</u>	<u>Full-time Headcount</u>	<u>% Change</u>	<u>Part-time Headcount</u>	<u>% Change</u>	<u>Total Headcount</u>	<u>% Change</u>	<u>Student Credit Hours</u>	<u>% Change</u>
1970	NA		NA		4,251			
1971	NA		NA		4,502	5.9%		
1972	NA		NA		4,904	8.9%		
1973	NA		NA		4,936	0.7%		
1974	NA		NA		4,887	-1.0%		
1975	NA		NA		4,948	1.2%		
1976	NA		NA		5,477	10.7%		
1977	NA		NA		5,232	-4.5%		
1978	NA		NA		5,415	3.5%		
1979	NA		NA		5,309	-2.0%		
1980	NA		NA		5,373	1.2%		
1981	NA		NA		5,817	8.3%		
1982	3,060		3,013		6,073	4.4%	58,458	
1983	3,190	4.2%	3,340	10.9%	6,530	7.5%	60,806	4.0%
1984	3,405	6.7%	3,352	0.4%	6,757	3.5%	64,070	5.4%
1985	3,314	-2.7%	3,394	1.3%	6,708	-0.7%	63,271	-1.2%
1986	3,213	-3.0%	3,243	-4.4%	6,456	-3.8%	61,629	-2.6%
1987	3,186	-0.8%	3,176	-2.1%	6,362	-1.5%	61,051	-0.9%
1988	3,177	-0.3%	3,157	-0.6%	6,334	-0.4%	60,756	-0.5%
1989	3,188	0.3%	2,974	-5.8%	6,162	-2.7%	59,601	-1.9%
1990	3,229	1.3%	3,097	4.1%	6,326	2.7%	61,404	3.0%
1991	3,241	0.4%	2,910	-6.0%	6,151	-2.8%	60,729	-1.1%
1992	3,413	5.3%	3,069	5.5%	6,482	5.4%	63,409	4.4%
1993	3,375	-1.1%	3,124	1.8%	6,499	0.3%	63,242	-0.3%
1994	3,389	0.4%	3,019	-3.4%	6,408	-1.4%	62,917	-0.5%
1995	3,176	-6.3%	2,923	-3.2%	6,099	-4.8%	59,720	-5.1%
1996	3,186	0.3%	2,895	-1.0%	6,081	-0.3%	59,693	0.0%
1997	3,295	3.4%	2,828	-2.3%	6,123	0.7%	60,911	2.0%
1998	3,214	-2.5%	2,804	-0.8%	6,018	-1.7%	59,431	-2.4%
1999	3,170	-1.4%	2,687	-4.2%	5,857	-2.7%	58,695	-1.2%
2000	3,187	0.5%	2,491	-7.3%	5,678	-3.1%	57,564	-1.9%
2001	3,208	0.7%	2,461	-1.2%	5,669	-0.2%	58,094	0.9%
2002	3,436	7.1%	2,504	1.7%	5,940	4.8%	61,906	6.6%
2003	3,867	12.5%	2,546	1.7%	6,413	8.0%	68,462	10.6%
2004	4,164	7.7%	2,583	1.5%	6,747	5.2%	73,165	6.9%
2005	4,342	4.3%	2,514	-2.7%	6,856	1.6%	74,478	1.8%
2006	4,394	1.2%	2,466	-1.9%	6,860	0.1%	75,204	1.0%
2007	4,310	-1.9%	2,324	-5.8%	6,634	-3.3%	73,070	-2.8%
2008	4,206	-2.4%	2,309	-0.6%	6,515	-1.8%	71,150	-2.6%
2009	3,980	-5.4%	2,230	-3.4%	6,210	-4.7%	67,716	-4.8%
2010	4,119	3.5%	2,410	8.1%	6,529	5.1%	70,714	4.4%
2011	4,259	3.4%	2,557	6.1%	6,816	4.4%	73,333	3.7%
2012	4,413	3.6%	2,388	-6.6%	6,801	-0.2%	74,061	1.0%
2013	4,332	-1.8%	2,316	-3.0%	6,648	-2.2%	72,585	-2.0%
2014	4,061	-6.3%	2,310	-0.3%	6,371	-4.2%	68,769	-5.3%
2015	3,949	-2.8%	2,314	0.2%	6,263	-1.7%	66,885	-2.7%
2016	3,856	-2.4%	2,206	-4.7%	6,062	-3.2%	64,747	-3.2%
2017	3,929	1.9%	2,079	-5.8%	6,008	-0.9%	65,346	0.9%
2018	3,971	1.1%	2,023	-2.7%	5,994	-0.2%	65,853	0.8%

[1] Full-time status is based on enrollment of 12 or more hours for undergraduate, 9 or more for graduate and law. Prior to 2006-07, full-time

Source: Enrollment Census Files

Table 4
Headcount by Student Classification and Full-time/Part-time Status
Spring 2013 to Spring 2018

	Full-time		Part-time		Total	
Spring 2013						
Freshmen	632	14.6%	178	7.7%	810	12.2%
Sophomores	768	17.7%	258	11.1%	1,026	15.4%
Juniors	894	20.6%	333	14.4%	1,227	18.5%
Seniors	1,291	29.8%	583	25.2%	1,874	28.2%
Postbaccalaureate	114	2.6%	136	5.9%	250	3.8%
<i>Subtotal undergraduate</i>	<i>3,699</i>	<i>85.4%</i>	<i>1,488</i>	<i>64.2%</i>	<i>5,187</i>	<i>78.0%</i>
Graduate	164	3.8%	266	11.5%	430	6.5%
Law	360	8.3%	6	0.3%	366	5.5%
Non-degree seeking	109	2.5%	556	24.0%	665	10.0%
Total	4,332	100.0%	2,316	100.0%	6,648	100.0%
<i>Percent Full-time/Part-time</i>	<i>65.2%</i>		<i>34.8%</i>			
Spring 2014						
Freshmen	563	13.9%	132	5.7%	695	10.9%
Sophomores	696	17.1%	199	8.6%	895	14.0%
Juniors	856	21.1%	344	14.9%	1,200	18.8%
Seniors	1,236	30.4%	573	24.8%	1,809	28.4%
Postbaccalaureate	120	3.0%	121	5.2%	241	3.8%
<i>Subtotal undergraduate</i>	<i>3,471</i>	<i>85.5%</i>	<i>1,369</i>	<i>59.3%</i>	<i>4,840</i>	<i>76.0%</i>
Graduate	146	3.6%	291	12.6%	437	6.9%
Law	328	8.1%	5	0.2%	333	5.2%
Non-degree seeking	116	2.9%	645	27.9%	761	11.9%
Total	4,061	100.0%	2,310	100.0%	6,371	100.0%
<i>Percent Full-time/Part-time</i>	<i>63.7%</i>		<i>36.3%</i>			
Spring 2015						
Freshmen	521	13.2%	126	5.4%	647	10.3%
Sophomores	694	17.6%	191	8.3%	885	14.1%
Juniors	807	20.4%	288	12.4%	1,095	17.5%
Seniors	1,209	30.6%	589	25.5%	1,798	28.7%
Postbaccalaureate	103	2.6%	111	4.8%	214	3.4%
<i>Subtotal undergraduate</i>	<i>3,334</i>	<i>84.4%</i>	<i>1,305</i>	<i>56.4%</i>	<i>4,639</i>	<i>74.1%</i>
Graduate	191	4.8%	330	14.3%	521	8.3%
Law	323	8.2%	6	0.3%	329	5.3%
Non-degree seeking	101	2.6%	673	29.1%	774	12.4%
Total	3,949	100.0%	2,314	100.0%	6,263	100.0%
<i>Percent Full-time/Part-time</i>	<i>63.1%</i>		<i>36.9%</i>			
Spring 2016						
Freshmen	523	13.6%	112	5.1%	635	10.5%
Sophomores	720	18.7%	153	6.9%	873	14.4%
Juniors	771	20.0%	269	12.2%	1,040	17.2%
Seniors	1,188	30.8%	565	25.6%	1,753	28.9%
Postbaccalaureate	83	2.2%	99	4.5%	182	3.0%
<i>Subtotal undergraduate</i>	<i>3,285</i>	<i>85.2%</i>	<i>1,198</i>	<i>54.3%</i>	<i>4,483</i>	<i>74.0%</i>
Graduate	213	5.5%	358	16.2%	571	9.4%
Law	296	7.7%	5	0.2%	301	5.0%
Non-degree seeking	62	1.6%	645	29.2%	707	11.7%
Total	3,856	100.0%	2,206	100.0%	6,062	100.0%
<i>Percent Full-time/Part-time</i>	<i>63.6%</i>		<i>36.4%</i>			
Spring 2017						
Freshmen	575	14.6%	104	5.0%	679	11.3%
Sophomores	724	18.4%	158	7.6%	882	14.7%
Juniors	868	22.1%	225	10.8%	1,093	18.2%
Seniors	1,100	28.0%	543	26.1%	1,643	27.3%
Postbaccalaureate	83	2.1%	87	4.2%	170	2.8%
<i>Subtotal undergraduate</i>	<i>3,350</i>	<i>85.3%</i>	<i>1,117</i>	<i>53.7%</i>	<i>4,467</i>	<i>74.4%</i>
Graduate	228	5.8%	305	14.7%	533	8.9%
Law	299	7.6%	5	0.2%	304	5.1%
Non-degree seeking	52	1.3%	652	31.4%	704	11.7%
Total	3,929	100.0%	2,079	100.0%	6,008	100.0%
<i>Percent Full-time/Part-time</i>	<i>65.4%</i>		<i>34.6%</i>			
Spring 2018						
Freshmen	522	13.1%	95	4.7%	617	10.3%
Sophomores	767	19.3%	165	8.2%	932	15.5%
Juniors	905	22.8%	220	10.9%	1,125	18.8%
Seniors	1,156	29.1%	471	23.3%	1,627	27.1%
Postbaccalaureate	80	2.0%	89	4.4%	169	2.8%
<i>Subtotal undergraduate</i>	<i>3,430</i>	<i>86.4%</i>	<i>1,040</i>	<i>51.4%</i>	<i>4,470</i>	<i>74.6%</i>
Graduate	198	5.0%	293	14.5%	491	8.2%
Law	301	7.6%	4	0.2%	305	5.1%
Non-degree seeking	42	1.1%	686	33.9%	728	12.1%
Total	3,971	100.0%	2,023	100.0%	5,994	100.0%
<i>Percent Full-time/Part-time</i>	<i>66.2%</i>		<i>33.8%</i>			

[1] Full-time status is based on enrollment of 12 or more hours for undergraduate and 9 or more for graduate and law.
Source: Enrollment census files

Table 5
Undergraduate Enrollment by Student Type
Spring 2014 to Spring 2018

<u>Student Type</u>	Spring 2014		Spring 2015		Spring 2016		Spring 2017		Spring 2018	
	Percent of		Percent of		Percent of		Percent of		Percent of	
	<u>Headcount</u>	<u>Total</u>	<u>Headcount</u>	<u>Total</u>	<u>Headcount</u>	<u>Total</u>	<u>Headcount</u>	<u>Total</u>	<u>Headcount</u>	<u>Total</u>
First-time Freshmen	69	1.4%	77	1.7%	94	2.1%	68	2.1%	41	0.9%
Transfers	166	3.4%	182	3.9%	162	3.6%	182	3.6%	206	4.6%
<i>Subtotal New</i>	235	4.9%	259	5.6%	256	5.7%	250	5.7%	247	5.5%
Returning ^[1]	220	4.5%	213	4.6%	213	4.8%	147	4.8%	156	3.5%
Continuing	4,385	90.6%	4,167	89.8%	4,014	89.5%	4,070	89.5%	4,067	91.0%
Total	4,840	100.0%	4,639	100.0%	4,483	100.0%	4,467	100.0%	4,470	100.0%

[1] Returning students are students who are re-enrolling at Washburn after stopping out for one or more terms.

Source: Enrollment census files.

Table 6
Student Credit Hours by Department
Spring 2018 Compared with Spring 2017

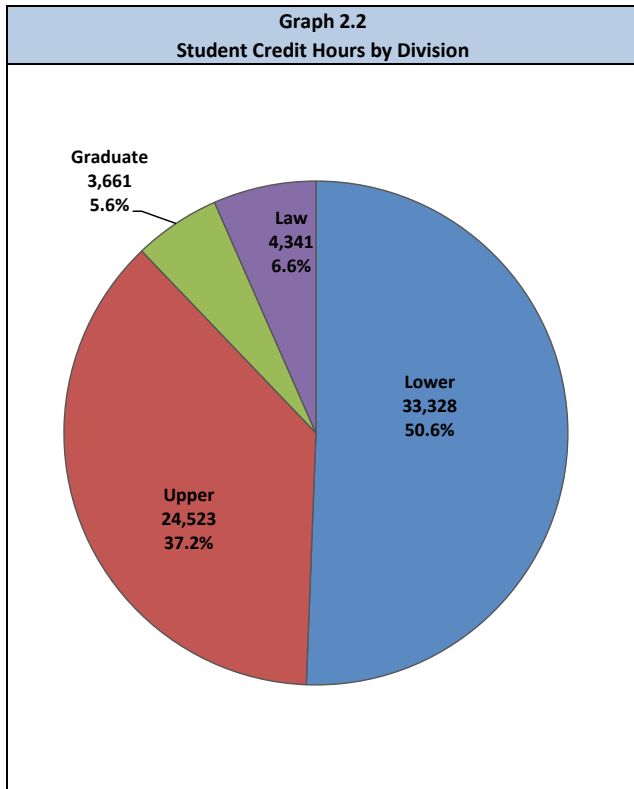
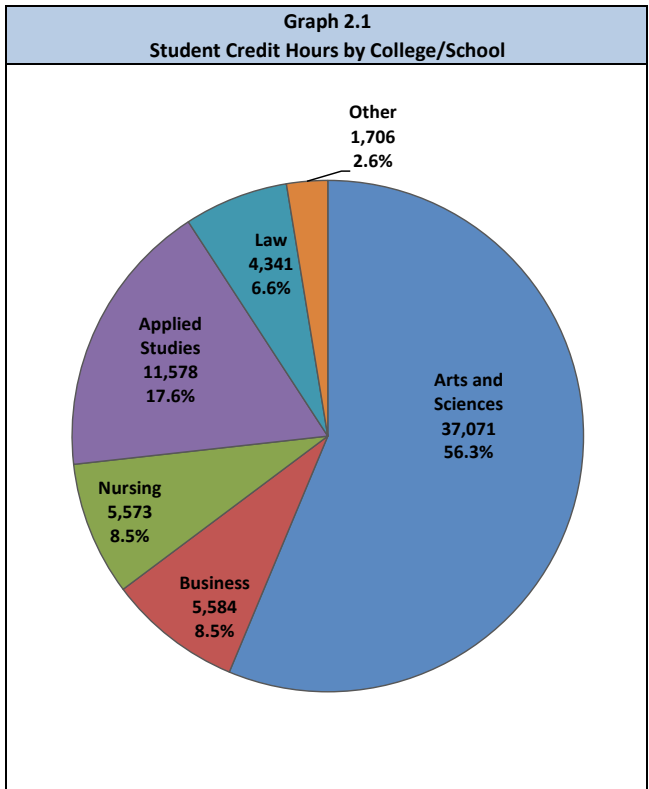
	Spring 2018					Spring 2017	Change	
	Lower	Upper	Graduate	Total SCH	% of Total	Total SCH	SCH	%
College of Arts and Sciences								
Art	1,158	554	6	1,718	2.6%	1,604	114	7.1%
Biology	3,316	431	0	3,747	5.7%	3,867	-120	-3.1%
Chemistry	792	229	0	1,021	1.6%	961	60	6.2%
Communication Studies	1,206	546	63	1,815	2.8%	1,875	-60	-3.2%
Computer Science	813	370	0	1,183	1.8%	1,069	114	10.7%
Education	539	1,330	84	1,953	3.0%	1,953	0	0.0%
English	2,244	1,878	0	4,122	6.3%	4,101	21	0.5%
History	1,821	438	0	2,259	3.4%	2,103	156	7.4%
Interdisciplinary Studies ^[1]	0	17	0	17	0.0%	4	13	325.0%
Kinesiology	655	918	0	1,573	2.4%	1,576	-3	-0.2%
Liberal Studies	0	0	18	18	0.0%	6	12	200.0%
Mass Media	702	575	0	1,277	1.9%	1,341	-64	-4.8%
Mathematics	3,601	277	0	3,878	5.9%	4,023	-145	-3.6%
Modern Languages	793	156	0	949	1.4%	968	-19	-2.0%
Music	1,634	312	0	1,946	3.0%	2,164	-218	-10.1%
Philosophy	876	58	3	937	1.4%	757	180	23.8%
Physics	1,407	74	0	1,481	2.2%	1,606	-125	-7.8%
Political Science	441	383	0	824	1.3%	1,186	-362	-30.5%
Psychology	1,736	677	272	2,685	4.1%	2,514	171	6.8%
Sociology	1,392	316	0	1,708	2.6%	1,670	38	2.3%
Anthropology	1,128	221	0	1,349	2.0%	1,522	-173	-11.4%
<i>Sociology/Anthropology Total</i>	<i>2,520</i>	<i>537</i>	<i>0</i>	<i>3,057</i>	<i>4.6%</i>	<i>3,192</i>	<i>-135</i>	<i>-4.2%</i>
Theatre	357	149	0	506	0.8%	659	-153	-23.2%
Women's and Gender Studies	42	63	0	105	0.2%	64	41	64.1%
College of Arts and Sciences Total	26,653	9,972	446	37,071	56.3%	37,593	-522	-1.4%
School of Business								
Accounting	477	396	171	1,044	1.6%	976	68	7.0%
Business	447	2,316	499	3,262	5.0%	3,064	198	6.5%
Economics	972	267	39	1,278	1.9%	1,248	30	2.4%
School of Business Total	1,896	2,979	709	5,584	8.5%	5,288	296	5.6%
School of Nursing	180	4,714	679	5,573	8.5%	5,063	510	10.1%
School of Applied Studies								
Allied Health	1,532	2,613	111	4,256	6.5%	4,015	241	6.0%
Clinical Laboratory Science	0	38	0	38	0.1%	38	0	0.0%
Technology Administration	0	283	0	283	0.4%	309	-26	-8.4%
<i>Allied Health Total</i>	<i>1,532</i>	<i>2,934</i>	<i>111</i>	<i>4,577</i>	<i>7.0%</i>	<i>4,362</i>	<i>215</i>	<i>4.9%</i>
Criminal Justice	714	1,380	138	2,232	3.4%	2,488	-256	-10.3%
Legal Studies	255	420	0	675	1.0%	557	118	21.2%
Military and Strategic Studies	0	105	0	105	0.2%	100	5	5.0%
<i>Criminal Justice & Legal Studies Total</i>	<i>969</i>	<i>1,905</i>	<i>138</i>	<i>3,012</i>	<i>4.6%</i>	<i>3,145</i>	<i>-133</i>	<i>-4.2%</i>
Human Services	621	846	279	1,746	2.7%	1,641	105	6.4%
Social Work	150	837	1,230	2,217	3.4%	2,235	-18	-0.8%
Army ROTC	2	24	0	26	0.0%	24	2	8.3%
School of Applied Studies Total	3,274	6,546	1,758	11,578	17.6%	11,407	171	1.5%
School of Law	0	0	4,341	4,341	6.6%	4,380	-39	-0.9%
Other Programs^[2]	1,325	312	69	1,706	2.6%	1,615	91	5.6%
Washburn University Total	33,328	24,523	8,002	65,853	100.0%	65,346	507	0.8%

[1] IS389, IS390, and IS400 SCH are included in the College of Art and Sciences.

[2] Other programs include Honors, Leadership, and Intensive English and IS courses not noted above.

Source: Enrollment census registration detail files

**Graph 2
Washburn University
Student Credit Hours
Spring 2018**



Source: Enrollment census file

Table 7
Student Credit Hours by Department
Spring 2018 Compared with Fall 2017

	Spring 2018					Fall 2017 Total	Change	
	Lower	Upper	Graduate	Total SCH	% of Total	SCH	SCH	%
College of Arts and Sciences								
Art	1,158	554	6	1,718	2.6%	1,973	-255	-12.9%
Biology	3,316	431	0	3,747	5.7%	4,491	-744	-16.6%
Chemistry	792	229	0	1,021	1.6%	1,446	-425	-29.4%
Communication Studies	1,206	546	63	1,815	2.8%	1,762	53	3.0%
Computer Science	813	370	0	1,183	1.8%	1,256	-73	-5.8%
Education	539	1,330	84	1,953	3.0%	1,925	28	1.5%
English	2,244	1,878	0	4,122	6.3%	5,287	-1,165	-22.0%
History	1,821	438	0	2,259	3.4%	2,338	-79	-3.4%
Interdisciplinary Studies ^[1]	0	17	0	17	0.0%	10	7	70.0%
Kinesiology	655	918	0	1,573	2.4%	1,737	-164	-9.4%
Liberal Studies	0	0	18	18	0.0%	9	9	100.0%
Mass Media	702	575	0	1,277	1.9%	1,373	-96	-7.0%
Mathematics	3,601	277	0	3,878	5.9%	4,481	-603	-13.5%
Modern Languages	793	156	0	949	1.4%	1,718	-769	-44.8%
Music	1,634	312	0	1,946	3.0%	2,138	-192	-9.0%
Philosophy	876	58	3	937	1.4%	771	166	21.5%
Physics	1,407	74	0	1,481	2.2%	1,495	-14	-0.9%
Political Science	441	383	0	824	1.3%	1,005	-181	-18.0%
Psychology	1,736	677	272	2,685	4.1%	2,735	-51	-1.8%
Sociology	1,392	316	0	1,708	2.6%	1,845	-137	-7.4%
Anthropology	1,128	221	0	1,349	2.0%	1,476	-127	-8.6%
<i>Sociology/Anthropology Total</i>	<i>2,520</i>	<i>537</i>	<i>0</i>	<i>3,057</i>	<i>4.6%</i>	<i>3,321</i>	<i>-264</i>	<i>-7.9%</i>
Theatre	357	149	0	506	0.8%	548	-42	-7.7%
Women's and Gender Studies	42	63	0	105	0.2%	63	42	66.7%
College of Arts and Sciences Total	26,653	9,972	446	37,071	56.3%	41,882	-4,812	-11.5%
School of Business								
Accounting	477	396	171	1,044	1.6%	1,158	-114	-9.8%
Business	447	2,316	499	3,262	5.0%	3,305	-43	-1.3%
Economics	972	267	39	1,278	1.9%	1,329	-51	-3.8%
School of Business Total	1,896	2,979	709	5,584	8.5%	5,792	-208	-3.6%
School of Nursing	180	4,714	679	5,573	8.5%	5,315	258	4.9%
School of Applied Studies								
Allied Health	1,532	2,613	111	4,256	6.5%	4,554	-298	-6.5%
Clinical Laboratory Science	0	38	0	38	0.1%	32	6	18.8%
Technology Administration	0	283	0	283	0.4%	243	40	16.5%
<i>Allied Health Total</i>	<i>1,532</i>	<i>2,934</i>	<i>111</i>	<i>4,577</i>	<i>7.0%</i>	<i>4,829</i>	<i>-252</i>	<i>-5.2%</i>
Criminal Justice	714	1,380	138	2,232	3.4%	2,548	-316	-12.4%
Legal Studies	255	420	0	675	1.0%	567	108	19.0%
Military and Strategic Studies	0	105	0	105	0.2%	105	0	0.0%
<i>Criminal Justice & Legal Studies Total</i>	<i>969</i>	<i>1,905</i>	<i>138</i>	<i>3,012</i>	<i>4.6%</i>	<i>3,220</i>	<i>-208</i>	<i>-6.5%</i>
Human Services	621	846	279	1,746	2.7%	1,668	78	4.7%
Social Work	150	837	1,230	2,217	3.4%	2,169	48	2.2%
Army ROTC	2	24	0	26	0.0%	37	-11	na
School of Applied Studies Total	3,274	6,546	1,758	11,578	17.6%	11,923	-345	-2.9%
School of Law	0	0	4,341	4,341	6.6%	4,257	84	2.0%
Other Programs^[2]	1,325	312	69	1,706	2.6%	4,235	-2,529	-59.7%
Washburn University Total	33,328	24,523	8,002	65,853	100.0%	73,404	-7,552	-10.3%

[1] IS389, IS390, and IS400 SCH are included in the College of Art and Sciences.

[2] Other programs include Honors, Leadership, and Intensive English and IS courses not noted above.

Source: Enrollment census registration detail files

Table 8
Distribution of Hours Enrolled by Student
Spring 2018

<u>Enrolled Credit Hours</u>	<u>Undergraduate</u>	<u>Graduate</u>	<u>Law</u>	<u>Non-degree seeking</u>
0	4	0	0	2
1	6	4	0	27
2	2	0	0	16
3	143	69	0	478
4	30	16	0	0
5	22	40	0	36
6	349	122	2	72
7	70	7	0	0
8	55	22	2	24
9	261	114	6	23
10	52	11	8	0
11	46	8	12	8
12	1,290	61	20	23
13	375	0	26	6
14	336	0	27	4
15	830	14	142	7
16	333	1	42	1
17	89	0	13	0
18	117	1	3	1
19	41	1	2	0
20	8	0	0	0
21	6	0	0	0
22	2	0	0	0
23	1	0	0	0
24	0	0	0	0
25	2	0	0	0
Total	4,470	491	305	728
Average Credit Hour Load	12.2	7.4	14.3	4.3

Table 9
Retention
Cumulative GPA by Full-time and Part-time Status
Fall 2017 to Spring 2018

Student Classification	Fall 2017 Class	Retained to Spring 2018	Retention Rate	Retained					Not Retained	
				All	Full-time		Part-time		N	Cum GPA
				Cum GPA	N	Cum GPA	N	Cum GPA		
Freshmen	1,141	911	79.8%	2.99	822	3.04	89	2.53	230	1.58
Sophomores	916	796	86.9%	3.01	686	3.04	110	2.81	120	2.38
Juniors	1,164	1,047	89.9%	3.14	879	3.18	168	2.94	117	2.71
Seniors	1,271	1,147	90.2%	3.19	863	3.23	284	3.08	124	2.75
<i>Subtotal undergraduate</i>	4,492	3,901	86.8%	3.09	3,250	3.13	651	2.92	591	2.21
Postbaccalaureate undergraduate	155	130	83.9%	3.37	75	3.44	55	3.27	25	3.08
Master's	406	358	88.2%	3.77	166	3.77	192	3.77	48	3.62
Doctorate	69	67	97.1%	3.75	35	3.78	32	3.72	2	3.48
Law	288	282	97.9%	2.91	282	2.91	0	--	6	1.81
<i>Subtotal degree-seeking</i>	5,410	4,738	87.6%	3.15	3,808	3.15	930	3.14	672	2.33
Non-degree seeking	947	510	53.9%	3.50	34	3.60	476	3.49	437	3.30
Total	6,357	5,248	82.6%	3.18	3,842	3.16	1,406	3.26	1,109	2.69

First-time Freshmen	Fall 2017 Cohort	Retained to Spring 2018	Retention Rate	Retained					Not Retained	
				All	Full-time		Part-time		N	Cum GPA
				Cum GPA	N	Cum GPA	N	Cum GPA		
Direct from high school	830	711	85.7%	3.12	668	3.16	43	2.54	119	1.86
Not direct from high school	71	45	63.4%	2.86	36	2.77	9	3.27	26	0.52
Total first-time freshmen	901	756	83.9%	3.11	704	3.14	52	2.65	145	1.63
IPEDS Categories for Reporting Retention										
First-time, full-time	819	704	86.0%							
First-time, part-time	82	52	63.4%							
Regular Admission	770	654	84.9%							
Admission by Exception	92	69	75.0%							
Ignite	39	33	84.6%							

[1] Fall 2017 enrollment of 6,691 has been adjusted to allow for graduates/awards in fall 2017.

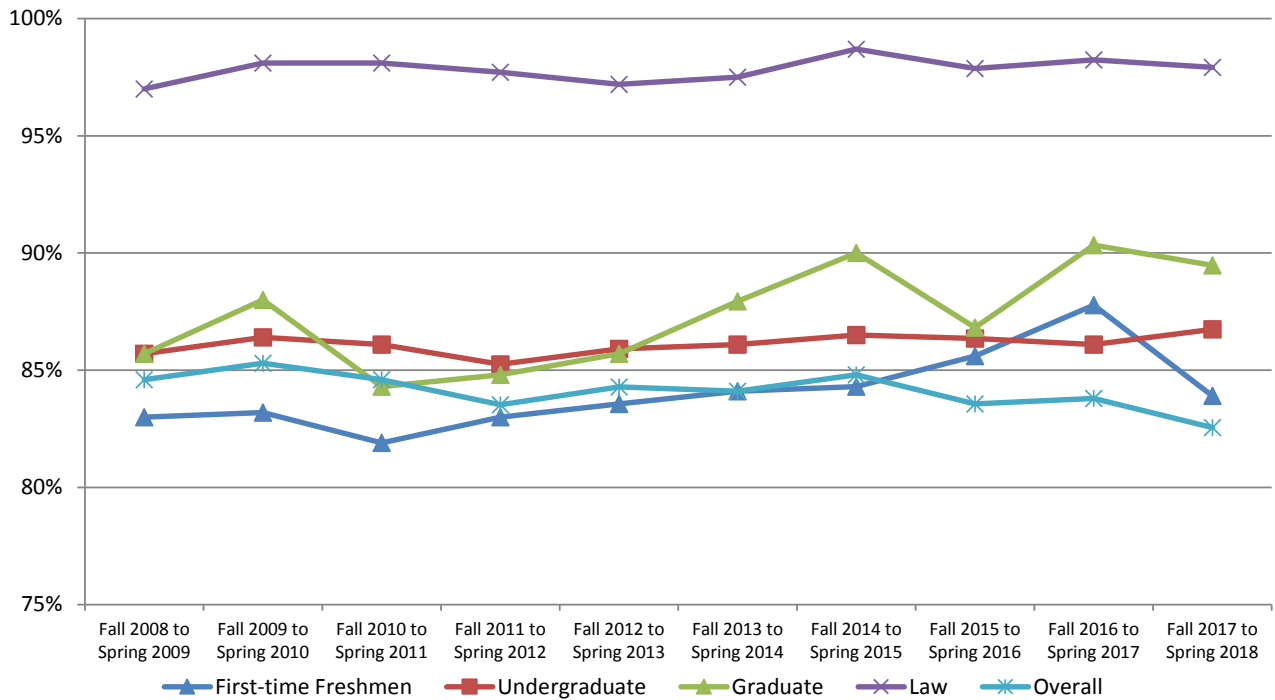
[2] Students retained in spring 2018 are reported according to their student level in fall 2017.

[3] Grade point averages are calculated using fall 2017 end-of-term grades.

Source: Fall 2017 and spring 2018 enrollment census files, fall 2017 EOT grades, fall 2017 degrees awarded.

Table 10
Fall-to-Spring Retention Rates

Semesters	First-time Freshmen	Undergraduate	Graduate	Law	Overall
Fall 2008 to Spring 2009	83.0%	85.7%	85.7%	97.0%	84.6%
Fall 2009 to Spring 2010	83.2%	86.4%	88.0%	98.1%	85.3%
Fall 2010 to Spring 2011	81.9%	86.1%	84.3%	98.1%	84.6%
Fall 2011 to Spring 2012	83.0%	85.3%	84.8%	97.7%	83.5%
Fall 2012 to Spring 2013	83.6%	85.9%	85.7%	97.2%	84.3%
Fall 2013 to Spring 2014	84.1%	86.1%	87.9%	97.5%	84.1%
Fall 2014 to Spring 2015	84.3%	86.5%	90.0%	98.7%	84.8%
Fall 2015 to Spring 2016	85.6%	86.4%	86.8%	97.9%	83.6%
Fall 2016 to Spring 2017	87.8%	86.1%	90.3%	98.2%	83.8%
Fall 2017 to Spring 2018	83.9%	86.7%	89.5%	97.9%	82.6%
Ten-Year Average Fall-to-Spring	84.0%	86.1%	87.3%	97.8%	84.1%



Note: Beginning with Fall 2013 to Spring 2014 Graduate retention rate includes the Doctorate of Nursing program.
 Note: The overall rate includes non-degree-seeking students.

Table 11
First-time Freshmen Retention
Cumulative GPA by Select Student Groups
Fall 2016 to Spring 2017

	Adjusted Fall 2017 Cohort	Retained to Spring 2017	Retained		Not Retained				
			Retention Rate	Cum GPA	Cum		Academic Standing		
					N	GPA	Good	Probation	Suspended
First-time Freshmen	901	756	83.9%	3.11	145	1.63	74	71	0
Live on Campus	499	435	87.2%	3.19	64	2.00	37	27	0
WU 101 Enrollees	615	518	84.2%	3.06	97	1.88	56	41	0
Admissions Scholarship Recipients	419	385	91.9%	3.40	34	2.27	22	12	0
Athletes	126	111	88.1%	3.25	15	2.48	11	4	0

[1] First-time freshmen retained in spring 2018 are reported according to their student level in fall 2017.

[2] Grade point averages are calculated using fall 2017 end-of-term grades.

[3] WU 101 Enrollees does not include HN 101 enrollees

Source: Fall 2017 and spring 2018 enrollment census files, fall 2017 EOT grades, fall 2017 degrees awarded.