

**Washburn University
Enrollment Report
Spring 2020**



Strategic Analysis & Reporting
April 3, 2020

**Washburn University
Enrollment Report
Spring 2020**

The purpose of the spring 2020 enrollment report is to provide information and understanding of current enrollment patterns of Washburn University students. The first section provides a brief summary with comparisons to spring 2019 of undergraduate level. The second section provides a more thorough breakdown for spring 2020 of the WU student body in terms of headcount, registered credit hours, demographics, GPA, and hours earned, along with specific comparisons to spring 2020. Summary tables are provided in the appendix.

Summary

All tables referenced in the summary section can be found in the appendix.

WU headcount enrollment: Total enrolled student headcount was 5894 for spring 2020, which is a decline of 5.0% compared to spring 2019 (Appendix: Table 1).

WU credit hours: Total enrolled student credit hours were 61.207 for spring of 2020, which is a decline of 4.0% from spring 2019 (Appendix: Table 1).

WU FTE: The full-time-equivalency of student headcount was 4,309 for spring of 2020, which is a decline of 4.4% from spring of 2019 (Appendix: Table 1).

FT/PT enrollment: Of the WU student body 65.3% were enrolled as full-time students, and 34.7% were enrolled as part-time students (Appendix: Table 1).

Average Credit Hour Load: On average undergraduate students took 12.2 credit hours, non-law graduate students took 7.1 credit hours, and law students took 14.2 credit hours during the spring 2020 term (Appendix: Table 1).

Concurrent Enrollment Program: High school student enrollment, which is almost entirely CEP enrollment, was 556 students, which is a 11.3% increase from last spring (Appendix: Table 1).

Attendance Pattern: On-campus credit hours or a mix of on-campus and on-line credit hours (53,692) comprised 87.7% of student credit hours for spring 2020 (Appendix: Table 1) with an underlying drop of “on-campus only” student hours from fall to spring.

Analysis and Analytics

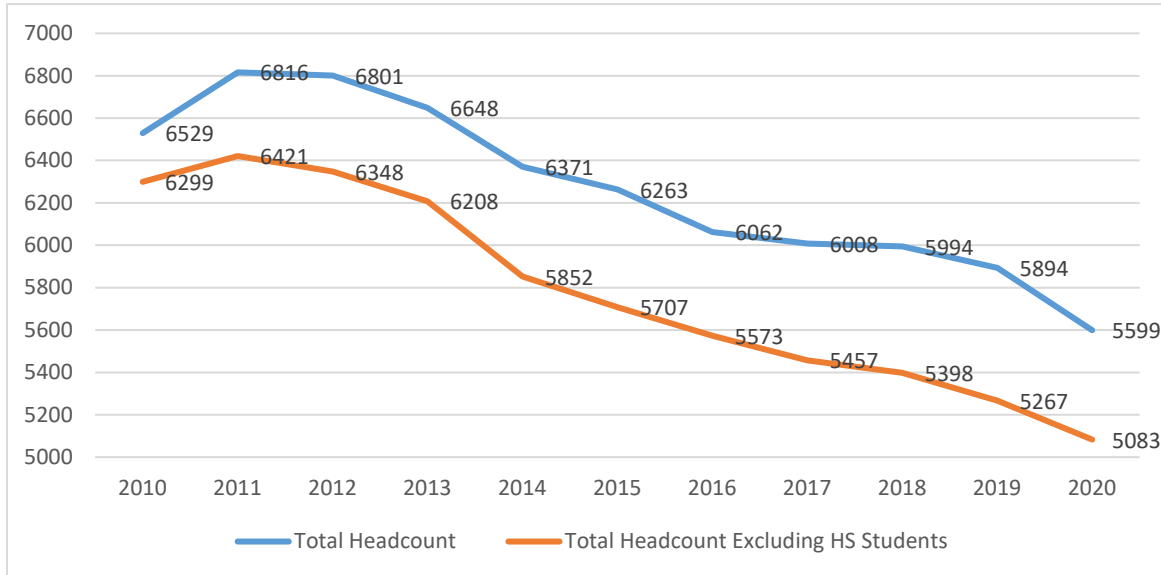
As an extension to the previous summary this section provides some historical framework and current trends in WU student enrollment for spring 2020.

Basic Counts

As illustrated in Figure 1, Washburn’s spring headcount enrollment has continued to decline since 2011. Prior to Spring 2020, the decline was largest in 2014 with a 4.17% decrease and smallest in 2018 with a

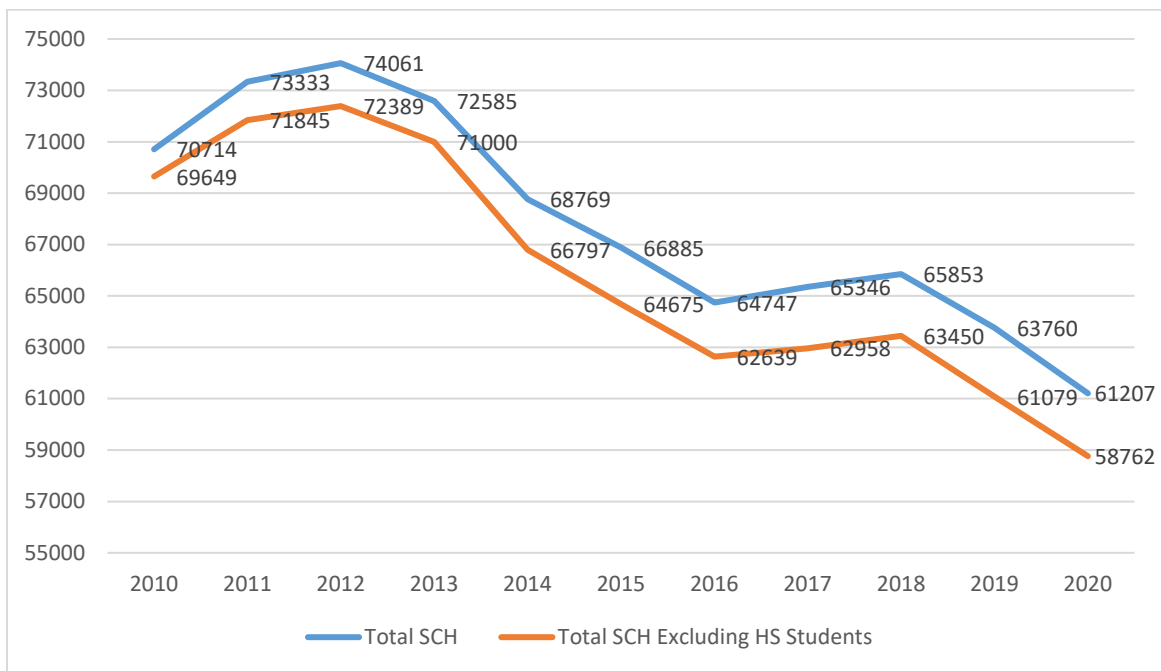
0.23% decline in student enrollment from the previous spring. Spring 2020 had a 4.4% decline from Spring 2019.

Figure 1: Washburn Spring 2020 Headcount Enrollment



WU student credit hour enrollment has fluctuated over the past ten spring terms, with spring 2020 as the minimum. However, the year to year decline was largest in spring 2014 with a 5.3% decrease, where Spring 2020 had a 4% decrease in student credit hour enrollment.

Figure 2: Washburn Spring 2020 Credit Hour Enrollment



Undergraduate Enrollment

Total undergraduate enrollment has followed the same declining trend as overall enrollment. Over three-quarters of undergraduate enrollment is comprised of continuing students, 78.3% for spring 2020 (90.7% of degree seeking Undergraduates, see Appendix: Table 5). This population has remained steady in proportion to total undergraduate enrollment for the past decade, ranging from 76.6% (in 2015) to 79.4% (in 2010).

The remaining components of undergraduate enrollment includes 9.9% of high school student enrollment in WU's concurrent enrollment program for Spring 2020, which reflects an 11.3% decrease year over year, and less than 2% of non-CEP and non-degree-seeking students.

Appendix to follow.

Table 1
Washburn University
Enrollment Summary
Spring 2020 Compared to Spring 2019

	Spring 2020		Spring 2019		Change	
	Term Count	% of Term	Term Count	% of Term	N	%
Total Headcount	5,599		5,894		-295	-5.0%
Total Student Credit Hours	61,207		63,760		-2,553	-4.0%
Total FTE	4,309		4,505		-196	-4.4%
Headcount by Student Level & Classification						
Freshmen	737	13.2%	759	12.9%	-22	-2.9%
Sophomores	803	14.3%	871	14.8%	-68	-7.8%
Juniors	962	17.2%	964	16.4%	-2	-0.2%
Seniors	1,481	26.5%	1,569	26.6%	-88	-5.6%
Postbaccalaureate undergraduate	168	3.0%	163	2.8%	5	3.1%
<i>Subtotal undergraduate</i>	<i>4,151</i>	<i>74.1%</i>	<i>4,326</i>	<i>73.4%</i>	<i>-175</i>	<i>-4.0%</i>
Master's	408	7.3%	443	7.5%	-35	-7.9%
Doctorate	86	1.5%	75	1.3%	11	14.7%
<i>Subtotal graduate</i>	<i>494</i>	<i>8.8%</i>	<i>518</i>	<i>8.8%</i>	<i>-24</i>	<i>-4.6%</i>
Law	308	5.5%	306	5.2%	2	0.7%
<i>Subtotal degree-seeking</i>	<i>4,953</i>	<i>88.5%</i>	<i>5,150</i>	<i>87.4%</i>	<i>-197</i>	<i>-3.8%</i>
High School	556	9.9%	627	10.6%	-71	-11.3%
Other non-degree seeking	90	1.6%	117	2.0%	-27	-23.1%
<i>Subtotal non-degree seeking</i>	<i>646</i>	<i>11.5%</i>	<i>744</i>	<i>12.6%</i>	<i>-98</i>	<i>-13.2%</i>
Total Headcount	5,599	100.0%	5,894	100.0%	-295	-5.0%
Headcount by Gender						
Male	2,150	38.4%	2,280	38.7%	-130	-5.7%
Female	3,449	61.6%	3,614	61.3%	-165	-4.6%
Total Headcount	5,599	100.0%	5,894	100.0%	-295	-5.0%
Headcount by Resident/Nonresident						
Kansas resident	4,790	85.6%	5,084	86.3%	-294	-5.8%
Nonresident	809	14.4%	810	13.7%	-1	-0.1%
Total Headcount	5,599	100.0%	5,894	100.0%	-295	-5.0%
Headcount by Full-time/Part-time						
Full-time	3,655	65.3%	3,810	64.6%	-155	-4.1%
Part-time	1,944	34.7%	2,084	35.4%	-140	-6.7%
Total Headcount	5,599	100.0%	5,894	100.0%	-295	-5.0%
60 & Over Tuition-free Audit Program^[1]						
Headcount	217		208		9	4.3%
Student Credit Hours	739		752		-13	-1.7%
Credit Hour based on Attendance Pattern						
On Campus Only	24,802	40.5%	28,279	44.4%	-3,477	-12.3%
Online Only	5,022	8.2%	5,400	8.5%	-378	-7.0%
Off Campus Only	2,493	4.1%	2,742	4.3%	-249	-9.1%
Combination	28,890	47.2%	27,340	42.9%	1,551	5.7%
Total Credit Hours	61,207	100.0%	63,760	100.0%	-2,553	-4.0%
Average Credit Hour Load						
Undergraduate	12.2		12.1			
Graduate	7.1		7.3			
Law	14.2		14.3			
Non-degree seeking	4.4		4.4			

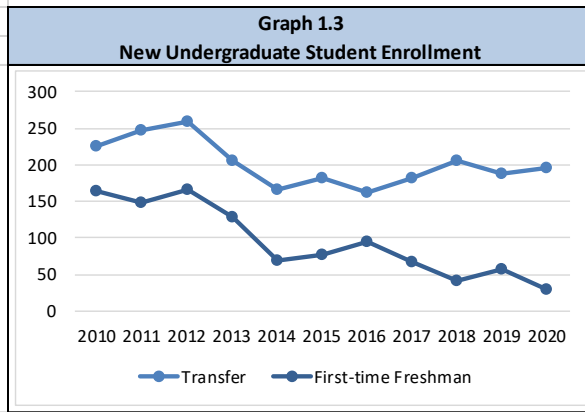
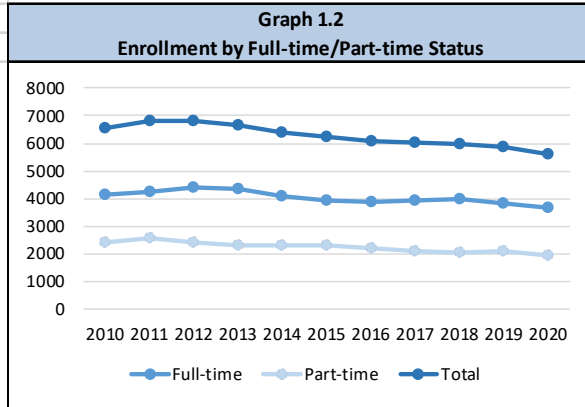
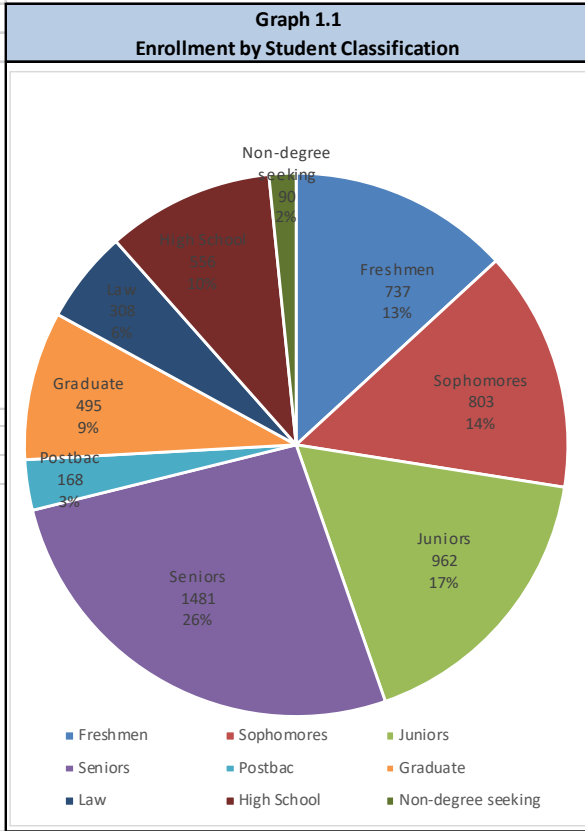
Source: Enrollment census files Spring 2019, Spring 2020.

Table 2
Washburn University
Enrollment Summary
Spring 2020 Compared to Fall 2019

	Spring 2020		Fall 2019		Change	
	Term	Count% of Term	Term	Count% of Term	N	%
					N	%
Total Headcount	5,599		6,285		-686	-10.9%
Total Student Credit Hours	61,207		68,659		-7,452	-10.9%
Total FTE	4,309		4,710		-401	-8.5%
Headcount by Student Level & Classification						
Freshmen	737	13.2%	1180	18.8%	-443	-37.5%
Sophomores	803	14.3%	822	13.1%	-19	-2.3%
Juniors	962	17.2%	990	15.8%	-28	-2.8%
Seniors	1,481	26.5%	1,418	22.6%	63	4.4%
Postbaccalaureate undergraduate	168	3.0%	157	2.5%	11	7.0%
<i>Subtotal undergraduate</i>	<i>4,151</i>	<i>74.1%</i>	<i>4,567</i>	<i>72.7%</i>	<i>-416</i>	<i>-9.1%</i>
Master's	408	7.3%	418	6.7%	-10	-2.4%
Doctorate	86	1.5%	97	1.5%	-11	-11.3%
<i>Subtotal graduate</i>	<i>494</i>	<i>8.8%</i>	<i>515</i>	<i>8.2%</i>	<i>-21</i>	<i>-4.1%</i>
Law	308	5.5%	302	4.8%	6	2.0%
<i>Subtotal degree-seeking</i>	<i>4,953</i>	<i>88.5%</i>	<i>5,384</i>	<i>85.7%</i>	<i>-431</i>	<i>-8.0%</i>
High School	556	9.9%	818	13.0%	-262	-32.0%
Other non-degree seeking	90	1.6%	83	1.3%	7	8.4%
<i>Subtotal non-degree seeking</i>	<i>646</i>	<i>11.5%</i>	<i>901</i>	<i>14.3%</i>	<i>-255</i>	<i>-28.3%</i>
Total Headcount	5,599	100.0%	6,285	100.0%	-686	-10.9%
Headcount by Gender						
Male	2,150	38.4%	2,384	37.9%	-234	-9.8%
Female	3,449	61.6%	3,901	62.1%	-452	-11.6%
Total Headcount	5,599	100.0%	6,285	100.0%	-686	-10.9%
Headcount by Resident/Nonresident						
Kansas resident	4,790	85.6%	5,445	86.6%	-655	-12.0%
Nonresident	809	14.4%	840	13.4%	-31	-3.7%
Total Headcount	5,599	100.0%	6,285	100.0%	-686	-10.9%
Headcount by Full-time/Part-time						
Full-time	3,655	65.3%	4,085	65.0%	-430	-10.5%
Part-time	1,944	34.7%	2,200	35.0%	-256	-11.6%
Total Headcount	5,599	100.0%	6,285	100.0%	-686	-10.9%
60 & Over Tuition-free Audit Program						
Headcount	217		231		-14	-6.1%
Student Credit Hours	739		613		126	20.6%
Credit Hour based on Attendance Pattern						
On Campus Only	24,802	40.5%	2,743	43.6%	22,059	804.2%
Online Only	5,022	8.2%	673	10.7%	4,349	646.2%
Off Campus Only	2,493	4.1%	818	13.0%	1,675	204.8%
Combination	28,890	47.2%	2,051	32.6%	26,839	1308.6%
Total Credit Hours	61,207	100.0%	6,285	100.0%	54,922	873.9%
Average Credit Hour Load						
Undergraduate	12.2		12.4			
Graduate	7.1		7.2			
Law	14.2		14.0			
Non-degree seeking	4.4		5.0			

Source: Enrollment census files Fall 2019, Spring 2020.

Graph 1
Washburn University
Headcount Enrollment
Spring 2020



**Table 3
Headcount Enrollment and Student Credit Hours
Spring 1970 to Spring 2020**

Spring Semester	Full-time¹ Headcount	% Change	Part-time Headcount	% Change	Total Headcount	% Change	Student Credit Hours	% Change
1970	NA		NA		4,251			
1971	NA		NA		4,502	5.9%		
1972	NA		NA		4,904	8.9%		
1973	NA		NA		4,936	0.7%		
1974	NA		NA		4,887	-1.0%		
1975	NA		NA		4,948	1.2%		
1976	NA		NA		5,477	10.7%		
1977	NA		NA		5,232	-4.5%		
1978	NA		NA		5,415	3.5%		
1979	NA		NA		5,309	-2.0%		
1980	NA		NA		5,373	1.2%		
1981	NA		NA		5,817	8.3%		
1982	3,060		3,013		6,073	4.4%	58,458	
1983	3,190	4.2%	3,340	10.9%	6,530	7.5%	60,806	4.0%
1984	3,405	6.7%	3,352	0.4%	6,757	3.5%	64,070	5.4%
1985	3,314	-2.7%	3,394	1.3%	6,708	-0.7%	63,271	-1.2%
1986	3,213	-3.0%	3,243	-4.4%	6,456	-3.8%	61,629	-2.6%
1987	3,186	-0.8%	3,176	-2.1%	6,362	-1.5%	61,051	-0.9%
1988	3,177	-0.3%	3,157	-0.6%	6,334	-0.4%	60,756	-0.5%
1989	3,188	0.3%	2,974	-5.8%	6,162	-2.7%	59,601	-1.9%
1990	3,229	1.3%	3,097	4.1%	6,326	2.7%	61,404	3.0%
1991	3,241	0.4%	2,910	-6.0%	6,151	-2.8%	60,729	-1.1%
1992	3,413	5.3%	3,069	5.5%	6,482	5.4%	63,409	4.4%
1993	3,375	-1.1%	3,124	1.8%	6,499	0.3%	63,242	-0.3%
1994	3,389	0.4%	3,019	-3.4%	6,408	-1.4%	62,917	-0.5%
1995	3,176	-6.3%	2,923	-3.2%	6,099	-4.8%	59,720	-5.1%
1996	3,186	0.3%	2,895	-1.0%	6,081	-0.3%	59,693	0.0%
1997	3,295	3.4%	2,828	-2.3%	6,123	0.7%	60,911	2.0%
1998	3,214	-2.5%	2,804	-0.8%	6,018	-1.7%	59,431	-2.4%
1999	3,170	-1.4%	2,687	-4.2%	5,857	-2.7%	58,695	-1.2%
2000	3,187	0.5%	2,491	-7.3%	5,678	-3.1%	57,564	-1.9%
2001	3,208	0.7%	2,461	-1.2%	5,669	-0.2%	58,094	0.9%
2002	3,436	7.1%	2,504	1.7%	5,940	4.8%	61,906	6.6%
2003	3,867	12.5%	2,546	1.7%	6,413	8.0%	68,462	10.6%
2004	4,164	7.7%	2,583	1.5%	6,747	5.2%	73,165	6.9%
2005	4,342	4.3%	2,514	-2.7%	6,856	1.6%	74,478	1.8%
2006	4,394	1.2%	2,466	-1.9%	6,860	0.1%	75,204	1.0%
2007	4,310	-1.9%	2,324	-5.8%	6,634	-3.3%	73,070	-2.8%
2008	4,206	-2.4%	2,309	-0.6%	6,515	-1.8%	71,150	-2.6%
2009	3,980	-5.4%	2,230	-3.4%	6,210	-4.7%	67,716	-4.8%
2010	4,119	3.5%	2,410	8.1%	6,529	5.1%	70,714	4.4%
2011	4,259	3.4%	2,557	6.1%	6,816	4.4%	73,333	3.7%
2012	4,413	3.6%	2,388	-6.6%	6,801	-0.2%	74,061	1.0%
2013	4,332	-1.8%	2,316	-3.0%	6,648	-2.2%	72,585	-2.0%
2014	4,061	-6.3%	2,310	-0.3%	6,371	-4.2%	68,769	-5.3%
2015	3,949	-2.8%	2,314	0.2%	6,263	-1.7%	66,885	-2.7%
2016	3,856	-2.4%	2,206	-4.7%	6,062	-3.2%	64,747	-3.2%
2017	3,929	1.9%	2,079	-5.8%	6,008	-0.9%	65,346	0.9%
2018	3,971	1.1%	2,023	-2.7%	5,994	-0.2%	65,853	0.8%
2019	3,810	-4.1%	2,084	3.0%	5,894	-1.7%	63,760	-3.2%
2020	3,655	-4.1%	1,944	-6.7%	5,599	-5.0%	61,207	-4.0%

[1] Full-time status is based on enrollment of 12 or more hours for undergraduate, 9 or more for graduate and law. Prior to 2006-

Table 4
Headcount by Student Classification and Full-time/Part-time Status
Spring 2015 to Spring 2020

	Full-time		Part-time		Total	
Spring 2015						
Freshmen	521	13.2%	126	5.4%	647	10.3%
Sophomores	694	17.6%	191	8.3%	885	14.1%
Juniors	807	20.4%	288	12.4%	1,095	17.5%
Seniors	1,209	30.6%	589	25.5%	1,798	28.7%
Postbaccalaureate	103	2.6%	111	4.8%	214	3.4%
<i>Subtotal undergraduate</i>	<i>3,334</i>	<i>84.4%</i>	<i>1,305</i>	<i>56.4%</i>	<i>4,639</i>	<i>74.1%</i>
Graduate	191	4.8%	330	14.3%	521	8.3%
Law	323	8.2%	6	0.3%	329	5.3%
Non-degree seeking	101	2.6%	673	29.1%	774	12.4%
Total	3,949	100.0%	2,314	100.0%	6,263	100.0%
<i>Percent Full-time/Part-time</i>	<i>63.1%</i>		<i>36.9%</i>			
Spring 2016						
Freshmen	523	13.6%	112	5.1%	635	10.5%
Sophomores	720	18.7%	153	6.9%	873	14.4%
Juniors	771	20.0%	269	12.2%	1,040	17.2%
Seniors	1,188	30.8%	565	25.6%	1,753	28.9%
Postbaccalaureate	83	2.2%	99	4.5%	182	3.0%
<i>Subtotal undergraduate</i>	<i>3,285</i>	<i>85.2%</i>	<i>1,198</i>	<i>54.3%</i>	<i>4,483</i>	<i>74.0%</i>
Graduate	213	5.5%	358	16.2%	571	9.4%
Law	296	7.7%	5	0.2%	301	5.0%
Non-degree seeking	62	1.6%	645	29.2%	707	11.7%
Total	3,856	100.0%	2,206	100.0%	6,062	100.0%
<i>Percent Full-time/Part-time</i>	<i>63.6%</i>		<i>36.4%</i>			
Spring 2017						
Freshmen	575	14.6%	104	5.0%	679	11.3%
Sophomores	724	18.4%	158	7.6%	882	14.7%
Juniors	868	22.1%	225	10.8%	1,093	18.2%
Seniors	1,100	28.0%	543	26.1%	1,643	27.3%
Postbaccalaureate	83	2.1%	87	4.2%	170	2.8%
<i>Subtotal undergraduate</i>	<i>3,350</i>	<i>85.3%</i>	<i>1,117</i>	<i>53.7%</i>	<i>4,467</i>	<i>74.4%</i>
Graduate	228	5.8%	305	14.7%	533	8.9%
Law	299	7.6%	5	0.2%	304	5.1%
Non-degree seeking	52	1.3%	652	31.4%	704	11.7%
Total	3,929	100.0%	2,079	100.0%	6,008	100.0%
<i>Percent Full-time/Part-time</i>	<i>65.4%</i>		<i>34.6%</i>			
Spring 2018						
Freshmen	522	13.1%	95	4.7%	617	10.3%
Sophomores	767	19.3%	165	8.2%	932	15.5%
Juniors	905	22.8%	220	10.9%	1,125	18.8%
Seniors	1,156	29.1%	471	23.3%	1,627	27.1%
Postbaccalaureate	80	2.0%	89	4.4%	169	2.8%
<i>Subtotal undergraduate</i>	<i>3,430</i>	<i>86.4%</i>	<i>1,040</i>	<i>51.4%</i>	<i>4,470</i>	<i>74.6%</i>
Graduate	198	5.0%	293	14.5%	491	8.2%
Law	301	7.6%	4	0.2%	305	5.1%
Non-degree seeking	42	1.1%	686	33.9%	728	12.1%
Total	3,971	100.0%	2,023	100.0%	5,994	100.0%
<i>Percent Full-time/Part-time</i>	<i>66.2%</i>		<i>33.8%</i>			
Spring 2019						
Freshmen	630	16.5%	129	6.2%	759	12.9%
Sophomores	724	19.0%	147	7.1%	871	14.8%
Juniors	766	20.1%	198	9.5%	964	16.4%
Seniors	1,095	28.7%	474	22.7%	1,569	26.6%
Postbaccalaureate	75	2.0%	88	4.2%	163	2.8%
<i>Subtotal undergraduate</i>	<i>3,290</i>	<i>86.4%</i>	<i>1,036</i>	<i>49.7%</i>	<i>4,326</i>	<i>73.4%</i>
Graduate	189	5.0%	329	15.8%	518	8.8%
Law	300	7.9%	6	0.3%	306	5.2%
Non-degree seeking	31	0.8%	713	34.2%	744	12.6%
Total	3,810	100.0%	2,084	100.0%	5,894	100.0%
<i>Percent Full-time/Part-time</i>	<i>64.6%</i>		<i>35.4%</i>			
Spring 2020						
Freshmen	586	16.0%	151	7.8%	737	13.2%
Sophomores	657	18.0%	146	7.5%	803	14.3%
Juniors	789	21.6%	173	8.9%	962	17.2%
Seniors	1,039	28.4%	442	22.7%	1,481	26.5%
Postbaccalaureate	87	2.4%	81	4.2%	168	3.0%
<i>Subtotal undergraduate</i>	<i>3,158</i>	<i>86.4%</i>	<i>993</i>	<i>51.1%</i>	<i>4,151</i>	<i>74.1%</i>
Graduate	166	4.5%	328	16.9%	494	8.8%
Law	304	8.3%	4	0.2%	308	5.5%
Non-degree seeking	27	0.7%	619	31.8%	646	11.5%
Total	3,655	100.0%	1,944	100.0%	5,599	100.0%
<i>Percent Full-time/Part-time</i>	<i>65.3%</i>		<i>34.7%</i>			

[1] Full-time status is based on enrollment of 12 or more hours for undergraduate and 9 or more for graduate and law.

Source: Enrollment census files

Table 5
Undergraduate Enrollment by Student Type
Spring 2015 to Spring 2020

Student Type	Spring 2015		Spring 2016		Spring 2017		Spring 2018		Spring 2019		Spring 2020	
	Headcount	Percent of Total	Headcount	Percent of Total	Headcount	Percent of Total	Headcount	Percent of Total	Headcount	Percent of Total	Headcount	Percent of Total
First-time Freshmen	77	1.7%	94	2.1%	68	2.1%	41	0.9%	57	1.4%	30	0.7%
Transfers	182	3.9%	162	3.6%	182	3.6%	206	4.6%	187	4.5%	195	4.7%
<i>Subtotal New</i>	259	5.6%	256	5.7%	250	5.7%	247	5.5%	244	5.9%	225	5.4%
Returning ^[1]	213	4.6%	213	4.8%	147	4.8%	156	3.5%	159	3.8%	161	3.9%
Continuing	4,167	89.8%	4,014	89.5%	4,070	89.5%	4,067	91.0%	3,925	94.1%	3,746	90.7%
Total	4,639	100.0%	4,483	100.0%	4,467	100.0%	4,470	100.0%	4,169	100.0%	4,132	100.0%

[1] Returning students are students who are re-enrolling at Washburn after stopping out for one or more terms.

Source: Enrollment census files.

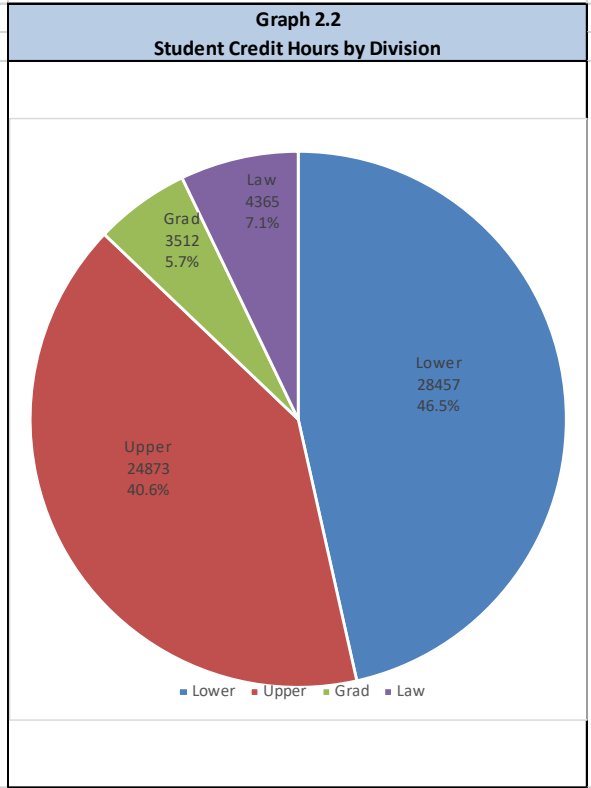
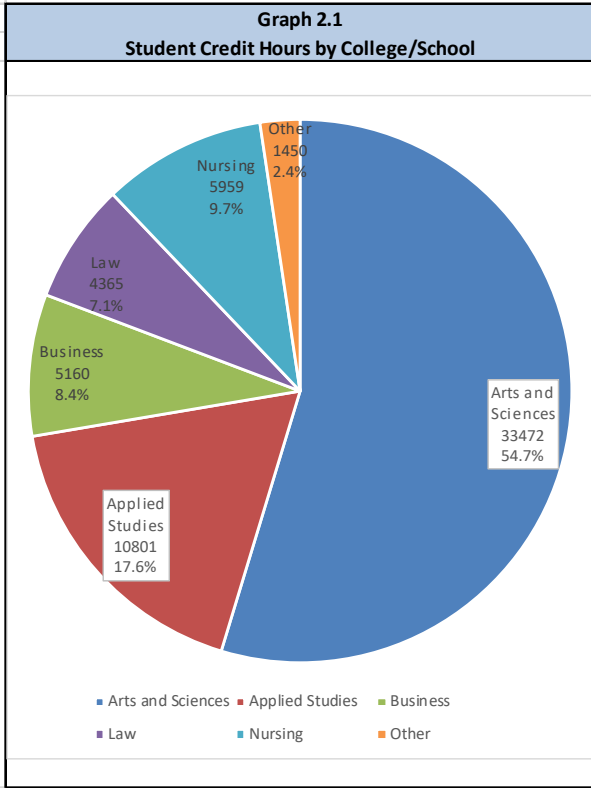
Table 6
Student Credit Hours by Department
Spring 2020 Compared with Spring 2019

	Spring 2020					Spring 2019	Change	
	Lower	Upper	Graduate	Total SCH	% of Total	Total SCH	SCH	%
College of Arts and Sciences								
Art	921	511	0	1,432	2.3%	1,547	-115	-7.4%
Biology	2,821	559	0	3,380	5.5%	3,463	-83	-2.4%
Chemistry	717	283	0	1,000	1.6%	1,024	-24	-2.3%
Communication Studies	1,002	714	87	1,803	2.9%	1,857	-54	-2.9%
Computer Information Sciences	616	354	0	970	1.6%	1,160	-190	-16.4%
Education	501	1,350	161	2,012	3.3%	1,985	27	1.4%
English	1,908	1,672	3	3,583	5.9%	3,738	-155	-4.1%
History	1,449	439	0	1,888	3.1%	1,843	45	2.4%
Interdisciplinary Studies	0	63	0	63	0.1%	51	12	23.5%
Kinesiology	668	768	0	1,436	2.3%	1,621	-185	-11.4%
Liberal Studies	0	0	6	6	0.0%	6	0	0.0%
Mass Media	510	584	0	1,094	1.8%	1,304	-210	-16.1%
Mathematics and Statistics	3,244	235	0	3,479	5.7%	3,895	-416	-10.7%
Modern Languages	733	117	0	850	1.4%	953	-103	-10.8%
Music	1,304	315	0	1,619	2.6%	1,780	-161	-9.0%
Philosophy & Religious Studies	828	233	0	1,061	1.7%	907	154	17.0%
Physics and Astronomy	1,275	116	0	1,391	2.3%	1,407	-16	-1.1%
Political Science	585	472	0	1,057	1.7%	843	214	25.4%
Psychology	1,453	831	226	2,510	4.1%	2,678	-168	-6.3%
Sociology	942	198	0	1,140	1.9%	1,515	-375	-24.8%
Anthropology	936	420	0	1,356	2.2%	1,274	82	6.4%
<i>Sociology/Anthropology Total</i>	<i>1,878</i>	<i>618</i>	<i>0</i>	<i>2,496</i>	<i>4.1%</i>	<i>2,789</i>	<i>-293</i>	<i>-10.5%</i>
Theatre	168	123	0	291	0.5%	395	-104	-26.3%
Women's and Gender Studies	0	51	0	51	0.1%	69	-18	-26.1%
College of Arts and Sciences Total	22,581	10,408	483	33,472	54.7%	35,315	-1,843	-5.2%
School of Business								
Accounting	444	288	174	906	1.5%	969	-63	-6.5%
Business	378	2,166	465	3,009	4.9%	3,522	-513	-14.6%
Economics	912	333	0	1,245	2.0%	1,164	81	7.0%
School of Business Total	1,734	2,787	639	5,160	8.4%	5,655	-495	-8.8%
School of Nursing	185	4,891	883	5,959	9.7%	5,627	332	5.9%
School of Applied Studies								
Allied Health	1,463	2,612	96	4,171	6.8%	4,377	-206	-4.7%
Clinical Laboratory Science	0	19	0	19	0.0%	57	-38	-66.7%
Technology Administration	0	222	0	222	0.4%	240	-18	-7.5%
<i>Allied Health Total</i>	<i>1,463</i>	<i>2,853</i>	<i>96</i>	<i>4,412</i>	<i>7.2%</i>	<i>4,674</i>	<i>-262</i>	<i>-5.6%</i>
Criminal Justice	684	1,536	76	2,296	3.8%	2,260	36	1.6%
Legal Studies	267	411	0	678	1.1%	726	-48	-6.6%
Military and Strategic Studies	0	50	0	50	0.1%	104	-54	-51.9%
<i>Criminal Justice & Legal Studies Total</i>	<i>951</i>	<i>1,997</i>	<i>76</i>	<i>3,024</i>	<i>4.9%</i>	<i>3,090</i>	<i>-66</i>	<i>-2.1%</i>
Human Services	210	852	213	1,275	2.1%	1,326	-51	-3.8%
Social Work	138	873	1,068	2,079	3.4%	2,166	-87	-4.0%
Army ROTC	5	6	0	11	0.0%	16	-5	-31.3%
School of Applied Studies Total	2,767	6,581	1,453	10,801	17.6%	11,272	-471	-4.2%
School of Law	0	0	4,365	4,365	7.1%	4,361	4	0.1%
Other Programs^[2]	1,190	206	54	1,450	2.4%	1,530	-80	-5.2%
Washburn University Total	28,457	24,873	7,877	61,207	100.0%	63,760	-2,553	-4.0%

[1] IS389, IS390, and IS400 SCH are included in the College of Art and Sciences.

[2] Other programs include Honors, Leadership, and Intensive English and IS courses not noted above.

Graph 2
Washburn University
Student Credit Hours
Spring 2020



Source: Enrollment census file

**Table 9
Persistence
Cumulative GPA by Full-time and Part-time Status
Fall 2019 to Spring 2020**

Student Classification ²	Fall 2019 Class ¹	Persisted to Spring 2020	Persistence Rate	Persisted					Not Persisted	
				All Cum GPA ³	Full-time		Part-time		N	GPA
					N	GPA	N	GPA		
Freshmen	1,185	957	80.8%	3.01	848	3.06	109	2.67	957	3.01
Sophomores	812	710	87.4%	3.04	602	3.09	108	2.72	710	3.04
Juniors	972	878	90.3%	3.19	750	3.22	128	3.00	878	3.19
Seniors	1,148	1,032	89.9%	3.24	754	3.30	278	3.08	1,032	3.24
Post-baccalaureate undergraduate	146	129	88.4%	3.37	73	3.42	56	3.30	129	3.37
<i>Subtotal undergraduate</i>	<i>4,263</i>	<i>3,706</i>	<i>86.9%</i>	<i>3.17</i>	<i>3,027</i>	<i>3.22</i>	<i>679</i>	<i>2.96</i>	<i>3,706</i>	<i>3.17</i>
Master's	459	418	91.1%	3.79	152	3.79	266	3.78	418	3.79
Doctorate	23	22	95.7%	3.89	17	3.96	5	3.67	22	3.89
Law	302	285	94.4%	2.90	285	2.90	0	--	285	2.90
<i>Subtotal degree-seeking</i>	<i>5,047</i>	<i>4,431</i>	<i>87.8%</i>	<i>3.44</i>	<i>3,481</i>	<i>3.47</i>	<i>950</i>	<i>3.47</i>	<i>4,431</i>	<i>3.44</i>
Non-degree seeking	893	479	53.6%	3.47	25	3.63	454	3.46	479	3.47
Total	5,940	4,910	82.7%	3.21	3,506	3.19	1,404	3.28	4,910	3.21

First-time Freshmen	Fall 2019 Cohort	Persisted to Spring 2020	Persistence Rate	Persisted					Not Persisted	
				All Cum GPA	Full-time		Part-time		N	GPA
					N	GPA	N	GPA		
Direct from high school	732	639	87.3%	3.14	601	3.17	38	2.64	639	3.14
Not direct from high school	56	34	60.7%	2.95	28	2.84	6	3.44	34	2.95
Total first-time freshmen	788	673	85.4%	3.13	629	3.16	44	2.75	673	3.13

IPEDS Categories for Reporting			
First-time, full-time	715	629	88.0%
First-time, part-time	73	44	60.3%
Regular Admission	668	582	87.1%
Admission by Exception	80	61	76.3%
Ignite	40	30	75.0%

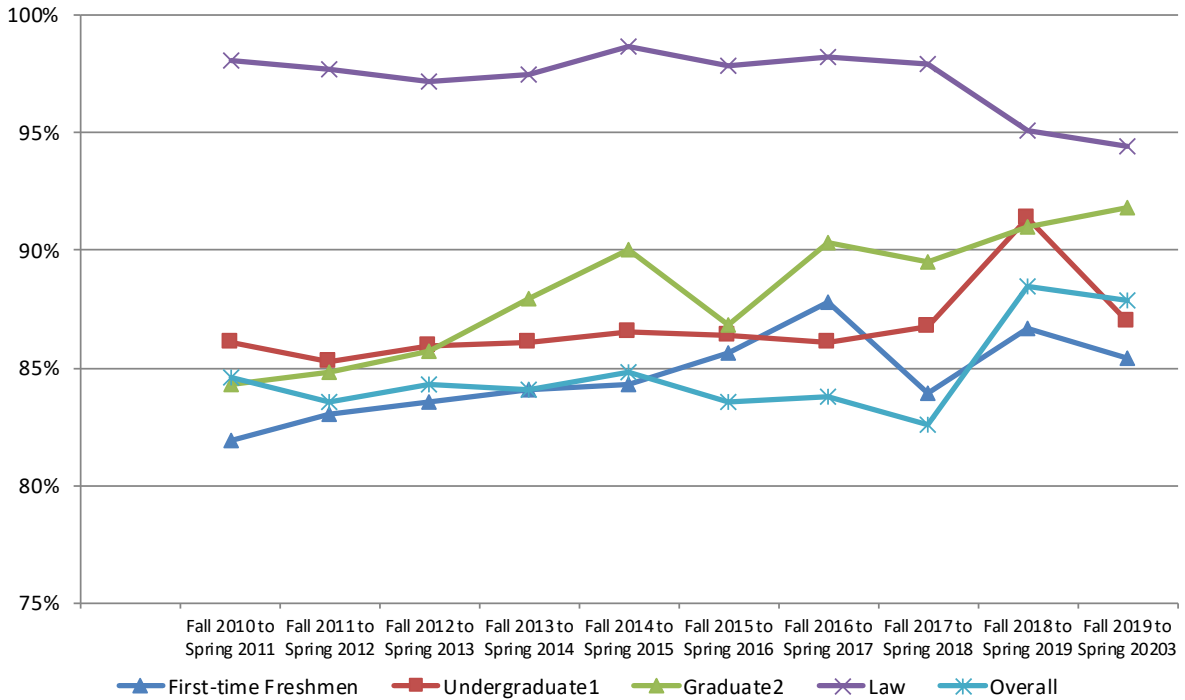
First-time Freshmen	Fall 2019 Cohort	Persisted to Spring 2020	Persistence Rate	Cum GPA	Persisted		Not Persisted		
					N	Cum GPA	Academic Standing		
							Good	Other	Unknown
First-time Freshmen	788	673	85.4%	3.13	115	1.91	53	47	15
Live on Campus	440	393	89.3%	3.18	47	2.18	27	15	5
WU 101 Enrollees	695	592	85.2%	3.09	103	2.00	50	41	12
Admissions Scholarship Recipients	142	135	95.1%	3.51	7	2.60	5	2	0
Athletes	111	103	92.8%	3.30	8	2.29	6	2	0

[1] Fall 2019 enrollment of 6,285 has been adjusted to allow for graduates/awards in fall 2019.
 [2] Students retained in spring 2020 are reported according to their student level in fall 2019.
 [3] Grade point averages are calculated using fall 2019 end-of-term grades.
 [4] WU 101 Enrollees does not include HN 101 enrollees

Source: Fall 2019 and spring 2020 enrollment census files, fall 2019 EOT grades, fall 2019 degrees awarded.

Table 10
Fall-to-Spring Degree-Seeking Student Persistence Rates

Semesters	First-time Freshmen	Undergraduate ¹	Graduate ²	Law	Overall
Fall 2010 to Spring 2011	81.9%	86.1%	84.3%	98.1%	84.6%
Fall 2011 to Spring 2012	83.0%	85.3%	84.8%	97.7%	83.5%
Fall 2012 to Spring 2013	83.6%	85.9%	85.7%	97.2%	84.3%
Fall 2013 to Spring 2014	84.1%	86.1%	87.9%	97.5%	84.1%
Fall 2014 to Spring 2015	84.3%	86.5%	90.0%	98.7%	84.8%
Fall 2015 to Spring 2016	85.6%	86.4%	86.8%	97.9%	83.6%
Fall 2016 to Spring 2017	87.8%	86.1%	90.3%	98.2%	83.8%
Fall 2017 to Spring 2018	83.9%	86.7%	89.5%	97.9%	82.6%
Fall 2018 to Spring 2019	86.7%	91.4%	91.0%	95.1%	88.5%
Fall 2019 to Spring 2020 ³	85.4%	87.0%	91.8%	94.4%	87.9%
Ten-Year Average Fall-to-Spring	84.6%	86.7%	88.2%	97.3%	84.8%



[1] The Undergraduate category includes post-baccalaureate students.

[2] Beginning with Fall 2013 to Spring 2014 Graduate retention rate includes the Doctorate of Nursing program.

[3] Non-degrees seeking student were not included in these calculations for fall 2019 into spring 2020.

Table 12
Washburn Tech
Enrollment Summary
Spring 2020 Compared with Spring 2019

	Spring 2020		Spring 2019		Change	
	N	Percent	N	Percent	N	Percent
Headcount						
Degree-seeking/Certificate-seeking	1,321	100.0%	1,326	98.9%	-5	-0.4%
Non-degree seeking/Non-certificate seeking	0	0.0%	15	1.1%	-15	-100.0%
Total Headcount	1,321	100.0%	1,341	100.0%	-20	-1.5%
Student Credit Hours	16,558		16,894		-336	-2.0%
Total FTE	1,104		1,126		-22	-2.0%
Headcount by Student Classification						
Postsecondary	592	44.8%	659	49.1%	-67	-10.2%
High School	729	55.2%	682	50.9%	47	6.9%
Total Headcount	1,321	100.0%	1,341	100.0%	-20	-1.5%
Headcount by Gender						
Male	826	62.5%	808	60.3%	18	2.2%
Female	495	37.5%	533	39.7%	-38	-7.1%
Total Headcount	1,321	100.0%	1,341	100.0%	-20	-1.5%
Headcount by Resident/Nonresident ^[1]						
Kansas Resident	1,321	100.0%	1,341	100.0%	-20	-1.5%
Nonresident	0	0.0%	0	0.0%	0	0.0%
Total Headcount	1,321	100.0%	1,341	100.0%	-20	-1.5%
Headcount by Full-time/Part-time						
Full-time	996	75.4%	1,006	75.0%	-10	-1.0%
Part-time	325	24.6%	335	25.0%	-10	-3.0%
Total Headcount	1,321	100.0%	1,341	100.0%	-20	-1.5%
Average Age						
Postsecondary Students	25.4		26.3			
High School Students	17.1		17.2			
Average Credit Hour Load						
Postsecondary Students	13.6		13.8			
High School Students	11.6		11.4			

[1] Residency status is in relation to tuition as of the beginning of the term.

Table 13
Washburn Tech
Enrollment Summary
Spring 2020 Compared with Fall 2019

	Spring 2020		Fall 2019		Change	
					N	Percent
Headcount						
Degree-seeking/Certificate-seeking	1,321	100.0%	1,469	99.3%	-148	-10.1%
Non-degree seeking/Non-certificate seeking	0	0.0%	11	0.7%	-11	-100.0%
Total Headcount	1,321	100.0%	1,480	100.0%	-159	-10.7%
Student Credit Hours						
Degree-seeking/Certificate-seeking	16,558	100.0%	18,454	99.9%	-1,896	-10.3%
Non-degree seeking/Non-certificate seeking	0	0.0%	23	0.1%	-23	-100.0%
Total Student Credit Hours	16,558	100.0%	18,477	100.0%	-1,919	-10.4%
Total FTE	1,104		1,232		-128	-10.4%
Headcount by Student Classification						
Postsecondary	592	44.8%	706	47.7%	-114	-16.1%
High School	729	55.2%	774	52.3%	-45	-5.8%
Total Headcount	1,321	100.0%	1,480	100.0%	-159	-10.7%
Headcount by Gender						
Male	826	62.5%	881	59.5%	-55	-6.2%
Female	495	37.5%	531	35.9%	-36	-6.8%
Not Indicated	0	0	68	4.6%	-68	-100.0%
Total Headcount	1,321	100.0%	1,480	100.0%	-159	-10.7%
Headcount by Resident/Nonresident ^[1]						
Kansas Resident	1,321	100.0%	1,480	100.0%	-159	-10.7%
Nonresident	0	0.0%	0	0.0%	0	0.0%
Total Headcount	1,321	100.0%	1,480	100.0%	-159	-10.7%
Minority Enrollment ^[2]	39.4%		40.0%			
Headcount by Full-time/Part-time						
Full-time	996	75.4%	1,087	73.4%	-91	-8.4%
Part-time	325	24.6%	393	26.6%	-68	-17.3%
Total Headcount	1,321	100.0%	1,480	100.0%	-159	-10.7%
Average Age						
Postsecondary Students	25.4		25.3			
High School Students	17.1		16.7			
Average Credit Hour Load						
Postsecondary Students	13.6		13.9			
High School Students	11.6		11.2			

[1] Residency status is in relation to tuition as of the beginning of the term.

[2] Student ethnicity/race is self-reported. In spring 2020, 53.1% (701) of Washburn Tech students have provided information on their ethnicity/race; 39.4% of students who have reported race/ethnicity data reported minority status.

