

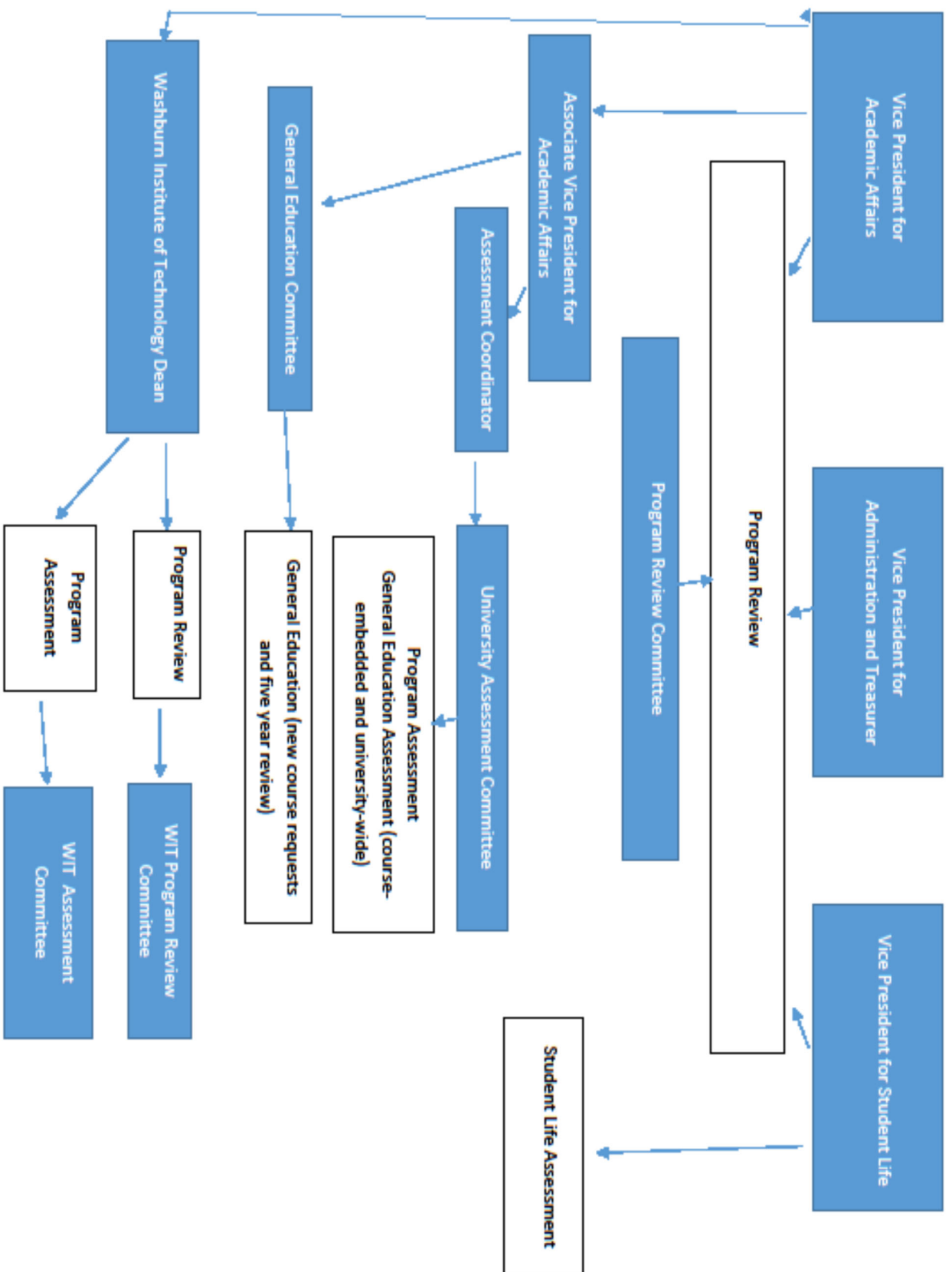
# Washburn University Assessment Overview



2020

# TABLE OF CONTENTS

Assessment at a Glance	<b>3</b>
University Program Review	<b>4</b>
• Overview	
• Responsibilities	
General Education	<b>5-6</b>
• Overview	
• Responsibilities	
Five Year Review Schedule	<b>7-8</b>
University Program Assessment	<b>9</b>
• Overview	
• Responsibilities	
Washburn Institute of Technology	<b>10</b>
• Overview	
• Committees	



## University Program Review Committee (VPAA/VPAT/VPSL)

Functions of the University Program Review Committee:

The Program Review process is intended to improve the quality of the academic, administrative, and student life programs offered at Washburn University. It is also intended to provide an organized opportunity for faculty to reflect on educational practices and review the role of their department/unit in the context of the University. Program Review offers the opportunity to reflect on department/unit and institutional priorities and encourages programs to consider how they support the strategic direction of the University. The primary goals are: 1) To enhance the quality of programs by assessing program strengths and challenges; 2) To align program needs and campus priorities with the planning and budgeting process; 3) To assure that department/unit priorities are consistent with the University's mission and strategic directions.

Program review and assessment information, after review by the appropriate Dean or unit head, is submitted to the program review committee via the Vice President for Academic Affairs' office. Department/program information is made available to the committee members for their review during the semester prior to the scheduled review.

The Program Review committee will meet with the department/program chair/unit head to discuss the executive summary, documentation and other relevant matters. Based on this meeting, the committee will prepare a report to be sent back to the department/program chair and unit head. Another meeting is then scheduled with the department/program chair and the appropriate Vice President to discuss the committee's response and plans for the recommendations or unit actions.

### University Program Review Committee Responsibilities:

#### Oversight:

Vice-President for Academic Affairs (academic)

Vice-President for Administration (administrative)

Vice-President for Student Life (student life)

**Preparation (Primary):** Deans, Chairs, and Directors

**Review:** Program Review Committee

#### Information:

Primary Contact: Aileen Ball, 785-670-1043

aileen.ball@washburn.edu

## **General Education Committee**

The General Education component of higher education specifically focuses on introducing students to ways of knowing, integrative knowledge, appreciation of historical context, common themes of human experience, social responsibility, analytical reasoning, civic engagement, or the development of practical skills and reflective habits of mind. The General Education requirements at Washburn University are designed with the intent of providing students with a grounding in liberal arts and sciences and shaping an informed, capable citizenry through a broad education in a range of disciplines. These courses ensure that students are equipped with the knowledge and skills necessary to engage with our rapidly-changing world over their lifetime. Beginning in fall 2013, in order to accomplish these goals, students will complete core courses in composition and mathematics and a broad range of course work in Arts and Humanities, Social Sciences, and Natural Sciences and Mathematics designed specifically to meet the following five major learning outcomes.

The function of the General Education Committee is to assist faculty members to develop or modify courses that facilitate the acquisition of university learning outcomes listed in the General Education Statement, to approve courses for general education based on the criteria established by the General Faculty, and to review transfer courses as necessary (e.g., technical course transfers, courses not approved for general education by the transferring institution) to determine whether they meet the spirit and intent of the Washburn University general education criteria.

If a Washburn course is disapproved by the Committee, the rationale for such action will be written with reference to the adopted standards and communicated to the VPAA and the sponsor.

Once a course is approved by the Committee, it will be the responsibility of the sponsoring department to review its implementation and assess its effectiveness at least every five years. The results of the review and assessment will be forwarded to the General Education Committee. Any change in the course's targeted university student learning outcome or in its general content or format must be submitted to the General Education Committee for approval.

Decisions of the Committee concerning course approval and five-year course review, will be reported by the VPAA or his/her designee to the deans. Decisions of the committee concerning course approval and five-year course review, may be appealed to the Faculty Senate with further appeal to the General Faculty.

Members of the Committee are: the VPAA or his/her designee, one faculty member from each division of the College, one faculty member each from the Schools of Applied Studies, Business and Nursing, and one library faculty member. Faculty members are elected by their constituent units.

## **General Education Committee Responsibilities:**

**Oversight:** Vice-President for Academic Affairs (academic) or Designee

**Preparation (Primary):** Chairs and Program Directors

**Review:** General Education Committee

### **Information:**

Primary Contact: Aileen Ball 785-670-1043

aileen.ball@washburn.edu

### **Data Assistance:**

Primary Contact: Christa Smith 785-670-1873

christa.smith@washburn.edu

### **Forms:**

General Education New Course Approval and Sample Syllabus:

<https://washburnmail.sharepoint.com/gened/SitePages/Home.aspx>

General Education Course Revision Requests

<https://washburnmail.sharepoint.com/gened/SitePages/Home.aspx>

Five Year Review Forms and Instructions

<https://washburnmail.sharepoint.com/gened/SitePages/Home.aspx>

## Five Year Review Schedule

2017-18	2018-19	2019-20		2020-21	2021-22	2022-23	2023-24	2024-25	2025-26	
AN 120/MU 106	AR 260	AN 112	PY 100	AN 114	AN 116	AR 307	AR 260	AN 112	AN 112	PS 101
AR 307	AR 120	AR 101	SO 100	AN 118	AR 309	BI 101	AR 120	AR 101	AR 101	PY 100
BI 101	CN101	AR 102	SP 102	AR 140	AR 310	BI 203	CN101	AR 102	AR 102	RG 101
BI 203	CN 150	AR 103	TH 102	AR 141	AS 104	CH 101	CN 150	AR 103	AR 103	RG 102
CH 101	EC 201	AR 303	TH 101/301	AR 301	BI 140	CH 121	EC 201	AR 303	AR 303	SO 100
CH 121	EN 131	AS 101	TH 202	AS 102	BI 202	CH 212	EN105	AS 101	AS 101	SP 102
CH 212	EN 135	BI 100	TH 207	BI 150	CH 103	EC 200	EN 131	BI 100	BI 100	TH 102
EC 200	EN 207	BI 102	WU 101	CH 103	EC 100	EN 133	EN 135	BI 102	BI 102	TH 101/301
EN 133	KN 248	CH 103		CH 151	EN 192	EN 177	EN 207	CH 103	CH 103	TH 202
EN 177	MA 112	CM 101		CH 152	EN 209	EN 178	EN 240	CM 101	CM 101	TH 207
EN 178	MA 116	CM 105		EN 103	EN 210	EN 212	EN 312	CM 105	CM 105	WU 101
EN 212	MA 123	CN 341		EN 110	EN 214	FL 102	KN 248	CN 341	CN 341	
FL 102	MU 108	CN 351		EN 134	GE 307	FR 201	MA 112	CN 351	CN 351	
FR 201	PO 106	EN 101		EN 138	GE 308	FR 202	MA 116	EN 101	EN 101	
FR 202	PO 225	EN 112		EN 145	GG 101	GE 201	MA 123	EN 112	EN 112	
GE 201	PY 211	EN 113		EN 190	GG 102	GE 202	MU 108	EN 113	EN 113	
GE 202	SP 380	EN 116		FR 308	GL 101	JP102	PO 106	EN 116	EN 116	
JP102		EN 206		FR 309	GL 103	SP201	PO 225	EN 206	EN 206	
SP201		EN 208		HI 111	HN 301	SP202	PY 211	EN 208	EN 208	
SP202		EN 300		HI 112	HN 302	HN 202	RG 103	EN 300	EN 300	
HN 202		EN 332		HN 201	HN 303	HN 203	SP 380	EN 332	EN 332	
HN 203		FR 102		HN 202	JP 201	IS175 (WG)	TH 309	AD 200	FR 102	
IS175 (WG)		FR 307		HN 203	JP 202	IS375 (WG)		MM 150	FR 307	
IS375 (WG)		GE 102		IS 170	MA 151	MA 117			GE 102	
MA 117		HI 100		LE 100	MU 104	PO 225			HI 100	
PO 225		HI 101		MA 142	PH/RG 207	PO 235			HI 101	
PO 235		HI 102		MM 100	PH 214	PS 102			HI 102	
PS 102		HI 105		MU 101	PH 220	PY 210			HI 105	
PY 210		HI 304		PO 107	PH 315				HI 304	

## Five Year Review Schedule

2017-18	2018-19	2019-20		2020-21	2021-22	2022-23	2023-24	2024-25	2025-26	
		HI 308		PO 255	PS 261				HI 308	
		HI 326		PH 102	PS 281				HI 326	
		HI 334		PH 117	PY 317				HI 334	
		HI 338		PH 201	SP 307				HI 338	
		HI 363		PH 202	SP 308				HI 363	
		IL 170		PS 120	TH 306				IL 170	
		IS 340		PS 126					IS 340	
		MA 140		PY 212					MA 140	
		MA 141		PY 231					MA 141	
		MU 100		PY 306					MU 100	
		MU 102		RG 105					MU 102	
		MU 103		RG 106					MU 103	
		MU 113		SO 101					MU 113	
		MU 120		TH 103					MU 120	
				TH 206					PH 100	
				PH 100					PH 104	
				PH 104					PH 115	
				PH 115						
				RG 101						
				RG 102						
				PS 101						



## University Program Assessment

The Assessment Committee is charged with coordinating all aspects of the University's assessment efforts, including the implementation and evaluation of the University's assessment plan, and development, implementation and evaluation of the assessment of General Education. Primary responsibility for assessment within their respective areas lies with the departments, major academic units, and the General Education Committee.

### University Assessment Committee Responsibilities:

**Oversight:** Associate Vice-President for Academic Affairs

**Preparation (Primary):** Chairs, Program Directors, and Assessment Liaisons

**Review:** University Assessment Committee

#### Information:

Primary Contact: Jericho Hockett, 785-670-1964

jericho.hockett@washburn.edu

Contact: Catlynn Jaynes, 785-670-2835

catlynn.jaynes@washburn.edu

Academic Assessment Analyst: Christa Smith, 785-670-1873

christa.smith@washburn.edu

#### Forms:

Assessment Plans, Reports, Evaluation Rubrics (templates):

<http://www.washburn.edu/academics/assessment/assessment-process-guidelines-forms.html>

Assessment Plans, Reports, and Evaluation Rubrics (previously completed):

S:\Assessment

Assessment Grants:

<http://www.washburn.edu/academics/assessment/assessment-grants.html>

## Assessment At Washburn Institute of Technology

Assessment is an integral part of the educational process at Washburn Tech, and accurate feedback is an important tool in continuously improving the institution's technical programs. Students can expect to participate in assessment activities prior to entry into programs, within specific courses, and following program completion for specific fields of study.

Technical instructors and staff partner on several committees to improve the Washburn Tech experience, both for the student and the employee. The following committee rosters are updated on an annual basis:

Assessment Committee 2020-2021 Roster	Department	Program Review Committee 2018-2019 Roster	Department
Chris Mullins	Construction	Cody Beauclair	Construction
Jim Seichepine	Transportation	Ashley Tyler	Health Care
Scott Nickel	Human Services	Aaron Starnes	Technology
Charles Mick	Technology	Daniel Stumpf	Technology
Richard Anderson	Technology	Peggy Snook	Health Care
Kimberly Young	Health Care	Judith Chenoweth	Human Services
Kristina Mick	Health Care	Larry Newell	Technology
John Rasmussen	Technology	Dave Tenpenny	Transportation
Darrin Dillingham	Transportation	Cody Scott	Technology

### Assessment Plans (completed):

<http://washburntech.edu/career-programs/Assessment%20Plans.html>

### Information:

Primary Contact: Gary Bayens, 785-670-3321, [gary.bayens@washburn.edu](mailto:gary.bayens@washburn.edu)