

2002-2003 Season

COMPANY

Music & lyrics: **Stephen Sondheim**

Book: **George Furth**

Sept. 27, 28, Oct. 3, 4, 5, 2002



Cast

Robert/Bobby. . . . **Joshua Dixon**
Sarah. . . . **Deb Johnson**
Harry. . . . **David McIntire**
Susan. . . . **Rebekah Zachritz**
Peter. . . . **Billy Clark**
Jenny. . . . **Sarah Heier**
David. . . . **Jason Puff**
Amy **Natalie McComas**
Paul. . . . **Jason Jones**
Joanne. . . . **Kayla Supon Carter**
Larry. . . . **Gary Jonson**
April. . . . **Katie Convery**
Marta. . . . **Mary Shirazi**
Kathy. . . . **Stacy Myers**

Production

Director **Paul Prece**
Musical Director/Conductor. . . . **Nancy Scrinopskie Epoch**
Choreographer. . . . **Sally Glassman**
Set & Lighting Design **Tony Naylor**
Costume Design **Sharon Sullivan**
Technical Direction. . . . **Tony Naylor**
Scenic Artists/ Supervisors **Lynn Wilson, Paul Waggoner**
Sound. . . . **Candice Baker**
Rehearsal Accompanist. . . . **Pat Gibson, Jodi Boyd**
Stage Managers. . . . **Dustin Smith, Monica Gutierrez**
Onstage Crew. . . . **Carl Dillman, Tyler Poole**

Shop and Show Crew. . . . **Timothy Badger, Heather Blanton, Aaron Mays, Stephen Pittman,
Jennifer Lee, Michelle Brown, Katerine Baker**

Publicity. . . . **Paul Prece**

Box Office. . . . **Kim Jones**

Box Office and House. . . . **Jo Huseman, Kim Jones**

Ushers. . . . **Al & Bev Gunderman, Arlene McEachern, Connie Widdell, Cindy Gatewood, Bobby McGirr,
Linda Marling, Joan Barker, Sandy Schwarz,
Mike & Irma Boyer, Ted & Teresa Eck, Janice Waldo, Bettie Garhart, Mary Hatke**

Orchestra

Piano. . . . **Pat Gibson**

Flute/Piccolo/Sax. . . . **Detria Anderson**

Flute/Clarinet/Sax. . . . **Kirt Saville**

Clarinet/Sax. . . . **Heather Brown**

Oboe/English Horn. . . . **James Mosher, Erica Bauman**

Bassoon. . . . **Erica Shavez**

Trumpet. . . . **Don Dabney & Kerry Lannan**

Trombone. . . . **Erik Berggren**

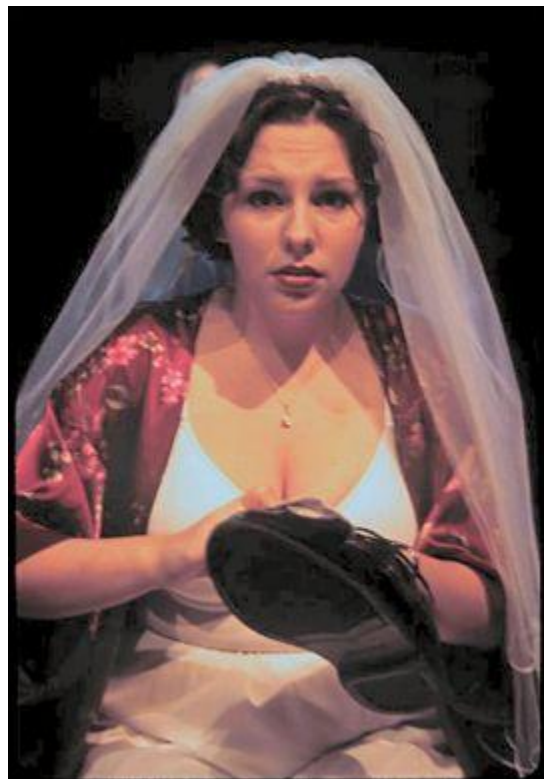
French Horn. . . . **Ben Saville**

Violin. . . . **Jonathan To, Sondra Roman, Ben Weichman, Kendra Patzer**

Cello. . . . **Karla Love**

Bass. . . . **Tim Patterson**

Drums/Percussion. . . . **Shawn Evans**





Photos: Paul Prece