

**WASHBURN UNIVERSITY**  
**1801 SW JEWELL AVE.**  
**LIVING LEARNING CENTER FLOORING PROJECT**

**TOPEKA, KANSAS**

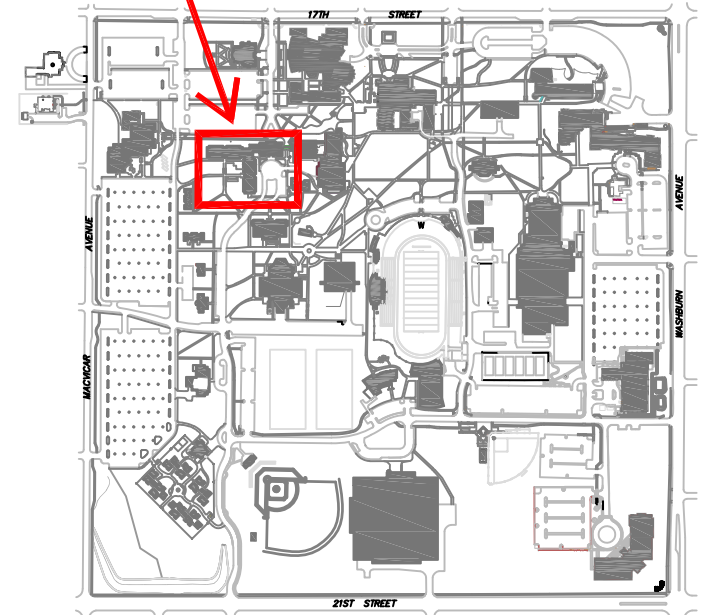
**MARCH 2024**

**INDEX TO SHEETS**

G-001 COVER & LOCATION MAP  
A-100 SPECIFICATIONS  
A-101 FIRST FLOOR PLAN  
A-102 SECOND FLOOR PLAN  
A-103 TRASH ROOM  
A-104 TRASH ROOM LOCATION LOWER LEVEL FLOOR  
A-105 TRASH ROOM LOCATION FIRST FLOOR  
A-106 TRASH ROOM LOCATION SECOND FLOOR  
A-107 TRASH ROOM LOCATION THIRD FLOOR  
A-108 TRASH ROOM LOCATION FOURTH FLOOR



**PROJECT LOCATION**



**WASHBURN CONTACTS**

WASHBURN POLICE.....785-670-1153  
FACILITIES SERVICES.....785-670-1149  
PURCHASING.....785-670-2333  
PROJECT COORDINATOR  
LYNN CRIPPEN.....785-670-1552

**LIVING LEARNING CENTER FLOORING PROJECT**

DEPARTMENT OF FACILITIES SERVICES

**WASHBURN**  
**UNIVERSITY**  
1801 SW JEWELL AVE.

LIVING LEARNING CENTER

DRAWN BY: HRA 2-19-24

SHEET:

G-001

SPECIFICATIONS:

PART 1 – GENERAL

1.1 SECTION REQUIREMENTS

- A. Submittals: Product Data for flooring and installation materials.
- B. Maintenance Material Submittal: Furnish extra materials from the same product run, that match products installed,
  - 1, Carpet Tile: Full size units equal to 5 percent of amount installed for each type indicated, but not less than 10 sq. yd.

1.2 PROJECT CONDITIONS

- A. Owner will occupy portions of building immediately adjacent to flooring installation area. Conduct installation so Owner's operations will not be disrupted. Provide not less than 72 hours' notice to Owner of activities that will affect Owner's operations.
- B. Maintain access to existing walkways, corridors, and other adjacent occupied or used facilities.

PART 2 - PRODUCTS

2.1 FLOORING A

- A. Products:
  - 1. Shaw Contract; In Tune, 5T496
  - B. Color: Combine, 50486
  - C. Size: 9 in x 36 in
  - D. Weight: 17.0 oz/yd^2
  - E. Backing: Synthetic; EcoWorx
  - F. Installation: Monolithic

2.2 FLOORING B

- A. Products:
  - 1. Shaw Contract, All Access, Swift 5T41
  - B. Color: Traverse. 14557
  - C. Size: 24 in x 24 in
  - D. Weight: 28 oz/yd^2
  - E. Backing: EcoWorx
  - F. Installation: Monolithic

2.3 FLOORING C

- A. Products:
  - 1. Shaw Contract, Ambition IV 26, 5A368
  - B. Color: Denim, 00415
  - C. Size: Broadloom
  - D. Weight: 26 oz/yd^2
  - E. Backing: Classicbac

2.4 FLOORING D

- A. Products:
  - 1. No Product to cover concrete outside of concrete sealer.

2.5 RUBBER BASE

- A. Products:
  - 1. Roppe Vinyl Wall Base
  - B. Color: Black, 100
  - C. Height: 6 in
  - D. Thickness: Standard, 1/8 in
  - E. Toe Base: Standard

2.5 INSTALLATION ACCESSORIES

- A. Trowelable Leveling and Patching Compounds: Latex-modified, portland cement- or blended hydraulic cement-based formulation provided or approved by flooring manufacturer for applications indicated.
- B. Adhesives: Water-resistant type recommended by manufacturer to suit resilient products and substrate conditions indicated.
- C. Concrete Sealer: Type: Acrylic, Color: Clear

PART 3 - EXECUTION

3.1 PREPARATION

- A. Site Access and Temporary Controls: Conduct installation and debris-removal operations to ensure minimum interference in corridors, with adjacent offices and other adjacent occupied and used facilities.
  - 1. Do not close or obstruct corridors, walks, or other adjacent occupied or used facilities without permission from Owner and authorities having jurisdiction. Provide alternate routes around closed or obstructed areas.
  - 2. Protect existing site improvements, appurtenances, and facilities not in the area of work.
  - 3. Store flooring and installation materials in dry spaces protected from the weather, with ambient temperatures maintained within range recommended by manufacturer, but not less than 50 deg F or more than 90 deg F. Store on flat surfaces.

3.2 INSTALLATION

- Follow manufacturer’s installation guide for all installation methods, materials and details.
- B. Prepare concrete substrates according to ASTM F 710. Verify that substrates are dry and free of curing compounds, sealers, and hardeners or other materials that may interfere with adhesive bod. Determine adhesion and dryness characteristics by performing bond and moisture tests recommended by manufacturer.
- C. Verify that subfloors are free of cracks, ridges, depressions, scale, and foreign deposits.
- D. Remove coatings, including curing compounds and other substances that are incompatible with adhesives and that contain soap, wax, oil, or silicone without using solvents. Use mechanical methods recommended in writing by manufacturer.
- E. Broom and vacuum clean substrates to be covered immediately before installing carpet tile.
- F. Extend flooring into toe spaces, door reveals, closets, open bottomed obstructions, removeable flanges, alcoves and similar openings.
- G. Install pattern parallel to walls and borders.
- H. Perform installation without marring visible surfaces.
  - I. For base, install in lengths as long as practicable without gaps at seams and with tops of adjacent pieces aligned.
- J. Tightly adhere flooring and base throughout length of each piece with material in continuous contact with horizontal and vertical surfaces.
- K. Existing Facilities: Comply with Owner's requirements for using and protecting elevators, stairs, walkways, loading docks, building entries, and other building facilities during installation.
- L. Remove yarns that protrude from flooring surface.
- M. Protect installed carpet tile to comply with CRI 104, Section 16, Protecting Indoor Installations.
- N. Contractor to clean entire floor before turning project over to Owner.

3.3 DISPOSAL OF MATERIALS

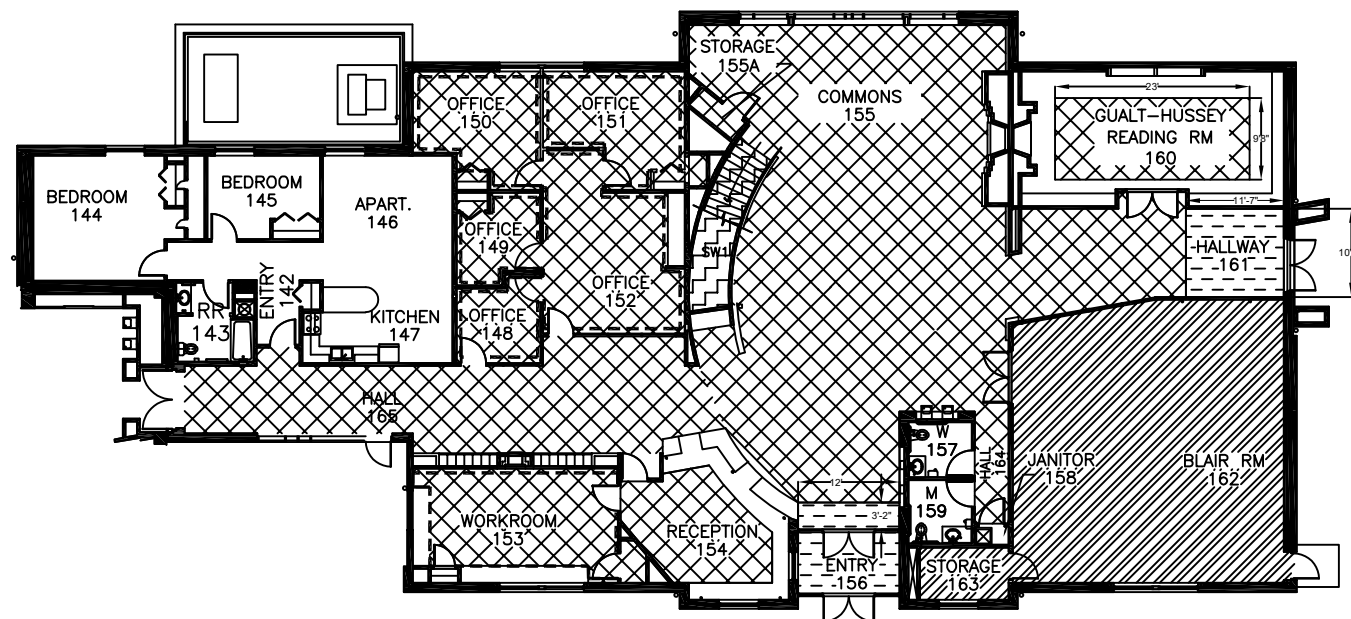
- A. General: Promptly dispose of any waste materials. Do not allow materials to accumulate on-site.
- B. Disposal: Transport demolished materials off Owner's property and legally disposes of them.

END OF SECTION


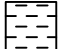


LIVING LEARNING FLOORING PROJECT		
<div>DEPARTMENT OF FACILITIES SERVICES</div> <div>WASHBURN UNIVERSITY</div> <div>1801 SW JEWELL TOPEKA, KANSAS</div>	DATE: MARCH 2024	
	DRAWN BY: LSC 3-25-24	
	LOCATION CODE LLC	PAGE NO. A100

## NOTES:

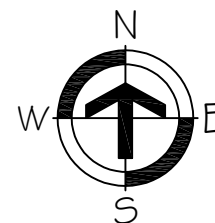
- 1) BIDDER SHALL NOTIFY THE WU PROJECT COORDINATOR OF ANY DISCREPANCIES BETWEEN SPECIFICATIONS AND DRAWINGS, BETWEEN MULTIPLE SPECIFICATION SECTIONS AND/OR BETWEEN MULTIPLE DRAWINGS. THE WU PROJECT COORDINATOR WILL DETERMINE WHICH SHALL GOVERN.
- 2) BIDDER SHALL VERIFY ALL DIMENSIONS AND CONDITIONS OF THE JOB SITE PRIOR TO BEGINNING WORK AND REPORT ANY DISCREPANCIES TO THE WU PROJECT COORDINATOR.
- 3) FLOOR FINISH PATTERNS ARE SYMBOLIC OF MATERIAL. THE PATTERNS SHOWN DO NOT INDICATE DESIRED PATTERN OF ACTUAL FLOOR MATERIALS. REFER TO SPECIFICATIONS AND FLOOR FINISH DETAILS FOR ACTUAL PATTERNS.
- 4) CONSTRUCTION IN PROGRESS/ CLOSED NOTICE SIGNS WILL BE POSTED AT ALL ENTRANCE DOORS DURING CONSTRUCTION BY CONTRACTOR.
- 5) HALLWAYS WILL BE KEPT CLEAR WITH PASS THROUGH.
- 6) CLEAN ADJACENT STRUCTURES, HALLWAYS & IMPROVEMENTS OF DUST, DIRT, AND DEBRIS TO MAINTAIN USABILITY W/ DAILY CLEANING AND TO RETURN ADJACENT AREAS TO CONDITION EXISTING BEFORE CONSTRUCTION BEGAN.
- 7) ALL DISPOSAL TO BE DONE BY CONTRACTOR. NOTIFY AND RECEIVE PLACEMENT APPROVAL FROM WU PROJECT COORDINATOR IF CONTRACTOR TO PLACE DUMPSTER ON SITE.
- 8) STOOLS & OTHER PLUMBING TO BE REMOVED BY WASHBURN PLUMBER IF NEEDED. CONTACT WU PROJECT COORDINATOR TO SCHEDULE.
- 9) STAIRS ARE COMPRISED OF 24 STEPS. ONE WITH LARGER PLATFORM STEP (62" LONG) MIDWAY.



## LEGEND

-  BASE BID FLOORING A
-  BASE BID FLOORING B
-  ALT 1. FLOORING C
-  ALT 2. FLOORING A
- RUBBER BASE - - - - -

0 5 10 20  
SCALE (FEET)

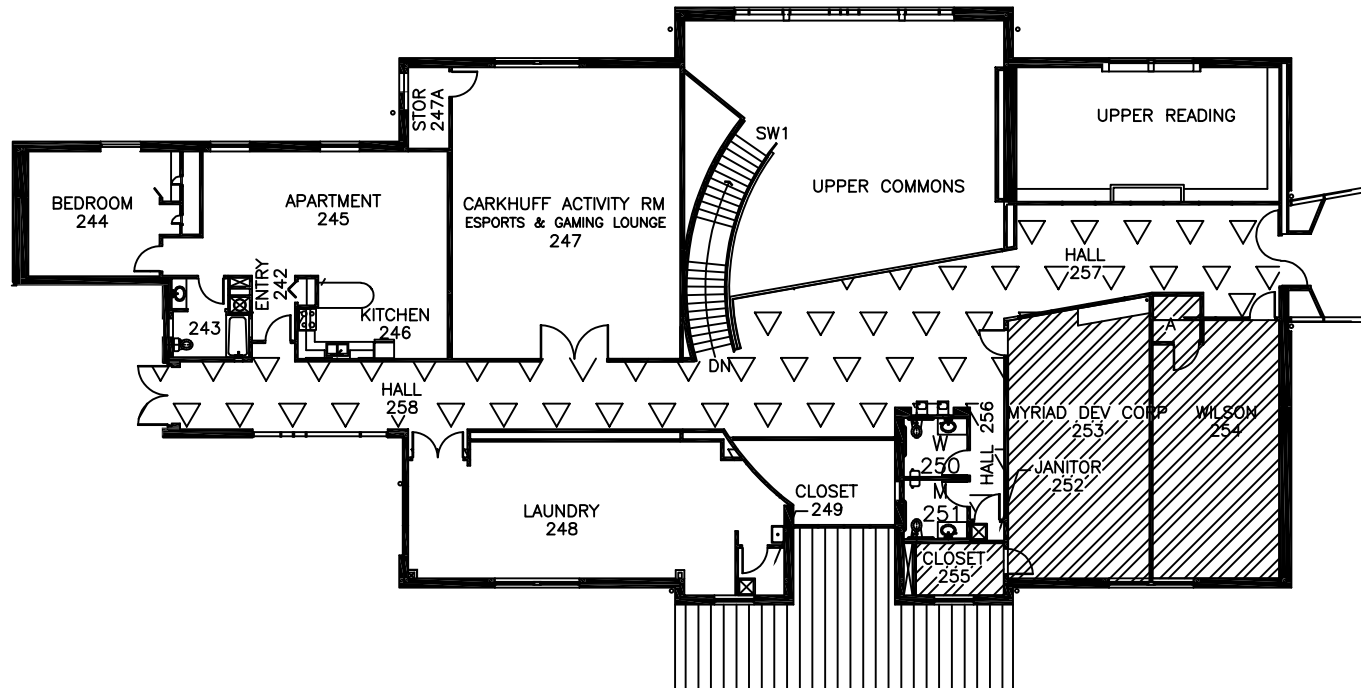


## LIVING LEARNING FLOORING PROJECT

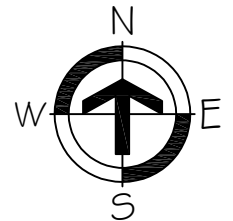
DEPARTMENT OF FACILITIES SERVICES  
**WASHBURN**  
**UNIVERSITY**  
1801 SW JEWELL AVE.

LIVING LEARNING CENTER  
DRAWN BY: HRA 2-28-24

SHEET:  
**A101**



## SECOND FLOOR PLAN



### LEGEND



ALT 2. FLOORING A



ALT 3. FLOORING A

RUBBER BASE - - - - -

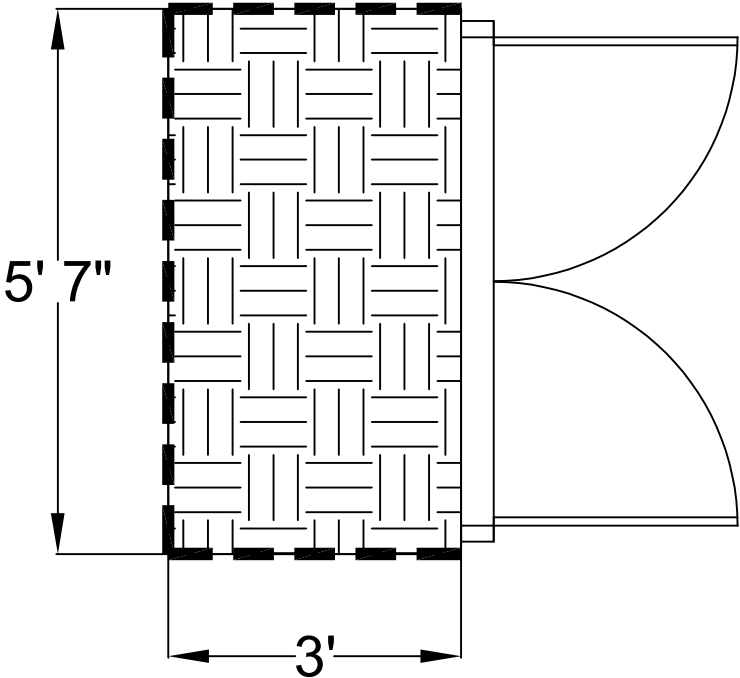
### LIVING LEARNING FLOORING PROJECT

DEPARTMENT OF FACILITIES SERVICES  
**WASHBURN**  
**UNIVERSITY**  
1801 SW JEWELL AVE.

LIVING LEARNING CENTER  
DRAWN BY: HRA 2-28-24

SHEET:  
**A102**

# TRASH ROOM TYP.





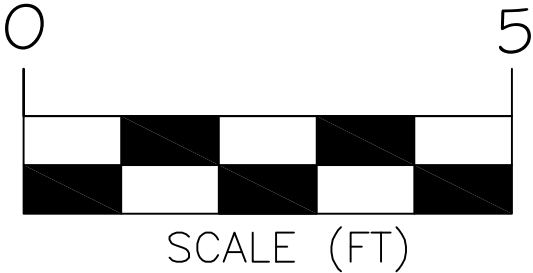
ROOMS INCLUDED
015A
129A
130A
229A
230A
329A
330A
429A

## NOTES:

1. ALL TRASH ROOMS TO HAVE EXISTING FLOORING DEMOLISHED AND CONCRETE FLOORING TO BE SEALED

### LEGEND

-  ALT 4. FLOORING D
-  RUBBER BASE



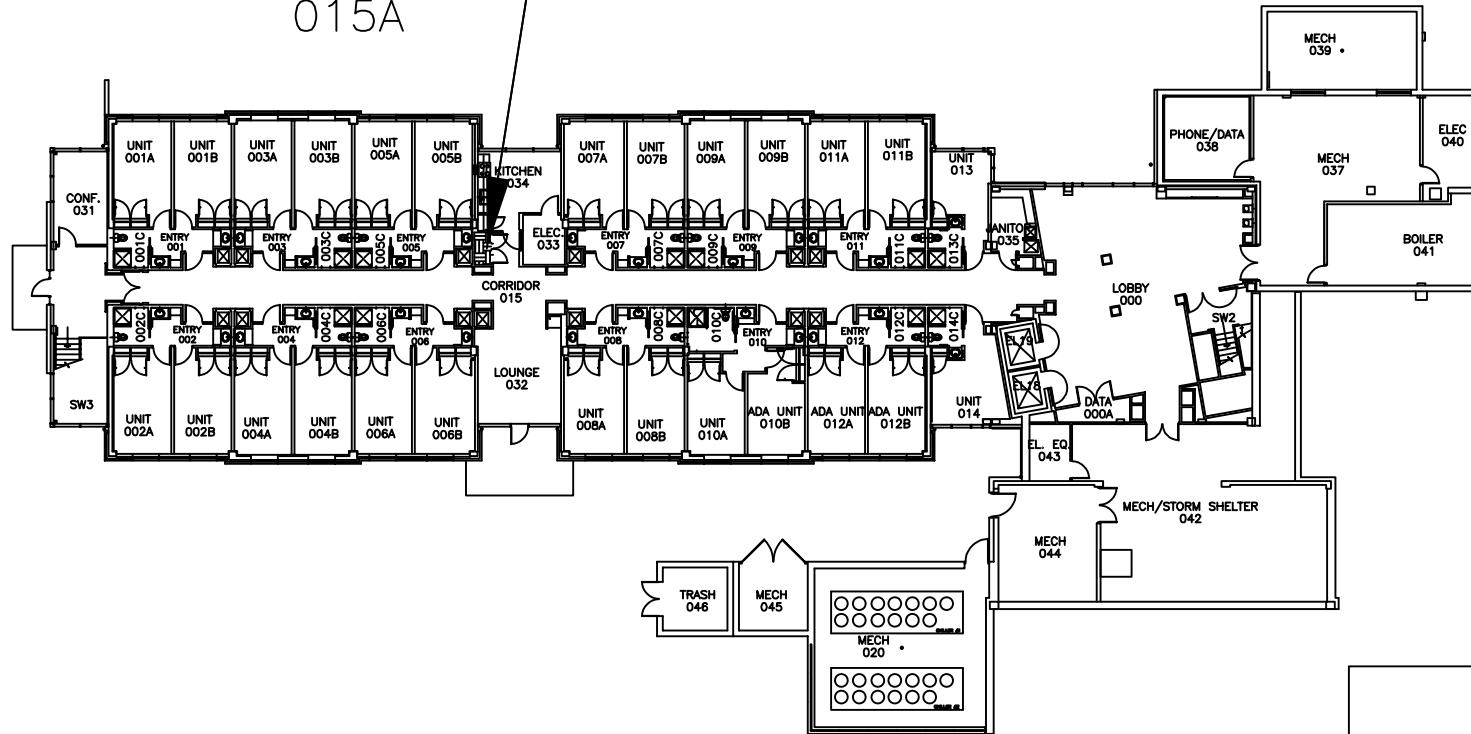
### LIVING LEARNING FLOORING PROJECT

DEPARTMENT OF FACILITIES SERVICES  
**WASHBURN**  
**UNIVERSITY**  
1801 SW JEWELL  
TOPEKA, KANSAS

DATE: MARCH 2024  
DRAWN BY: HRA  
LOCATION CODE  
LLC

BUILDING NO.  
1  
PAGE NO.  
A103

TRASH ROOM  
015A

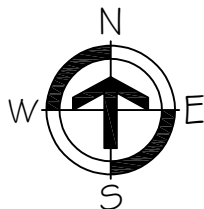


## LEGEND



ALT 4. FLOORING D

## LOWER LEVEL FLOOR PLAN



## KEY PLAN

BLDG #1—WEST WING

BLDG #2

BLDG #1—SOUTH WING

## LIVING LEARNING FLOORING PROJECT

DEPARTMENT OF FACILITIES SERVICES

**WASHBURN  
UNIVERSITY**

1801 SW JEWELL  
TOPEKA, KANSAS

DATE: MARCH 2024

DRAWN BY: HRA

LOCATION CODE

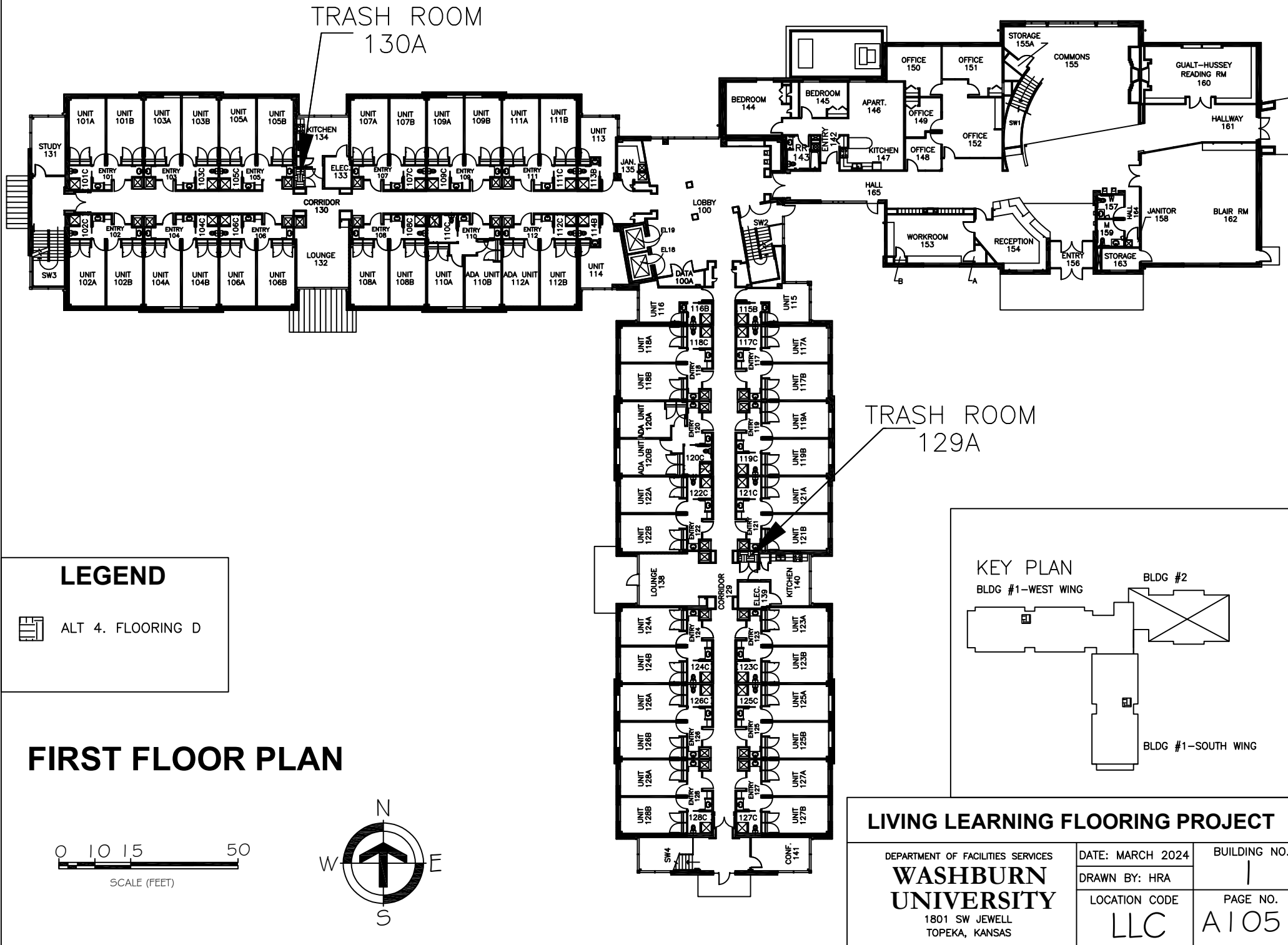
LLC

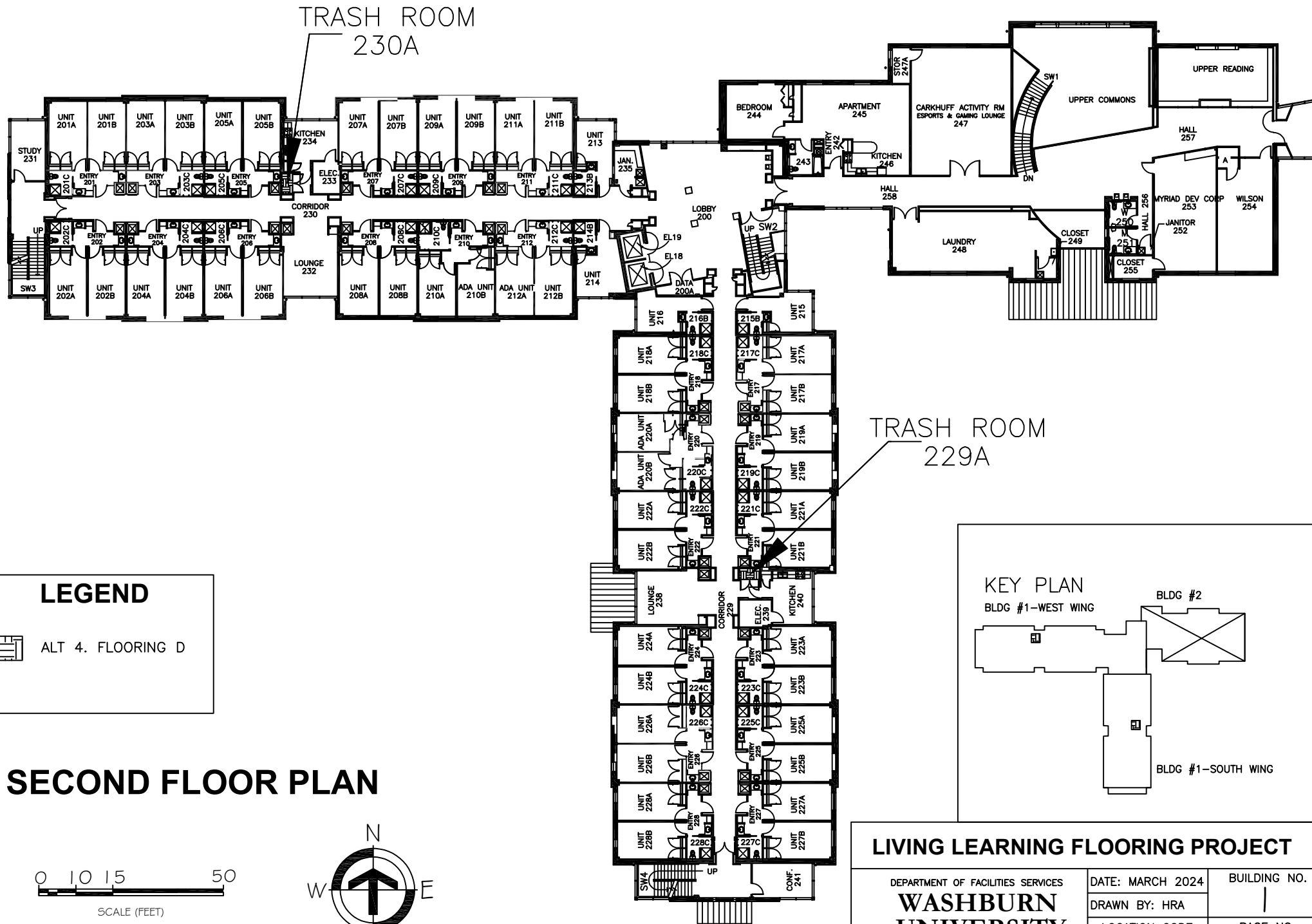
BUILDING NO.

1

PAGE NO.

A104



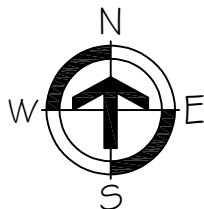


## LEGEND

ALT 4. FLOORING D

## SECOND FLOOR PLAN

0 10 15 50  
SCALE (FEET)



## KEY PLAN

BLDG #1-WEST WING

BLDG #2

BLDG #1-SOUTH WING

## LIVING LEARNING FLOORING PROJECT

DEPARTMENT OF FACILITIES SERVICES

**WASHBURN  
UNIVERSITY**

1801 SW JEWELL  
TOPEKA, KANSAS

DATE: MARCH 2024

DRAWN BY: HRA

LOCATION CODE

LLC

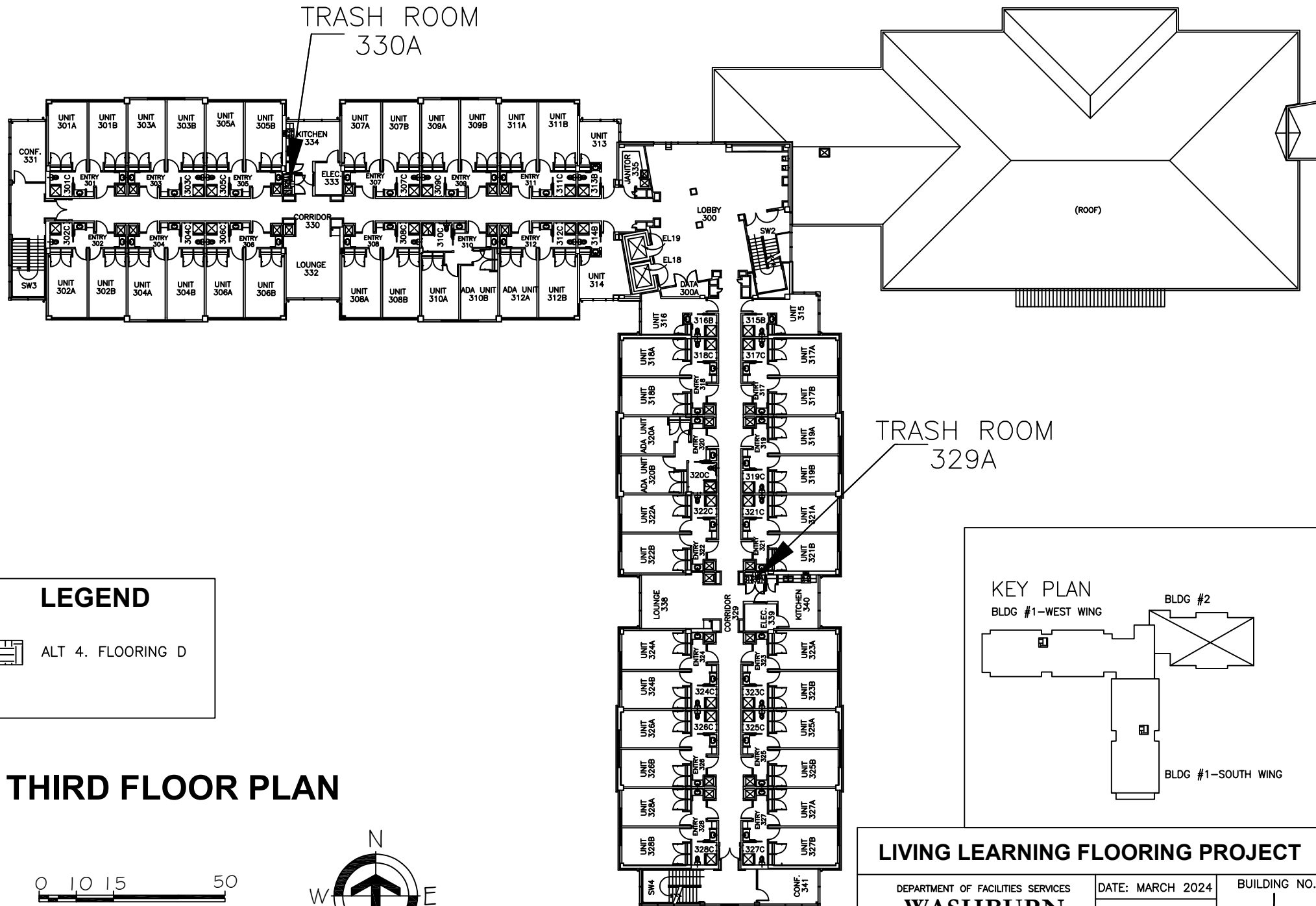
BUILDING NO.

1

PAGE NO.

A106

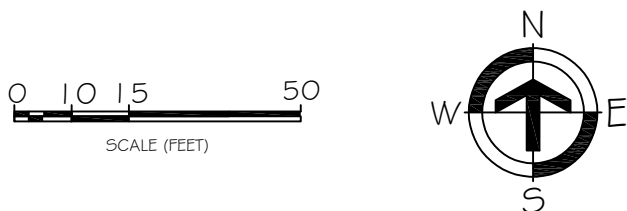




## LEGEND

ALT 4. FLOORING D

## THIRD FLOOR PLAN



## KEY PLAN

BLDG #1-WEST WING

BLDG #2

BLDG #1-SOUTH WING

## LIVING LEARNING FLOORING PROJECT

DEPARTMENT OF FACILITIES SERVICES

**WASHBURN  
UNIVERSITY**

1801 SW JEWELL  
TOPEKA, KANSAS

DATE: MARCH 2024

DRAWN BY: HRA

LOCATION CODE

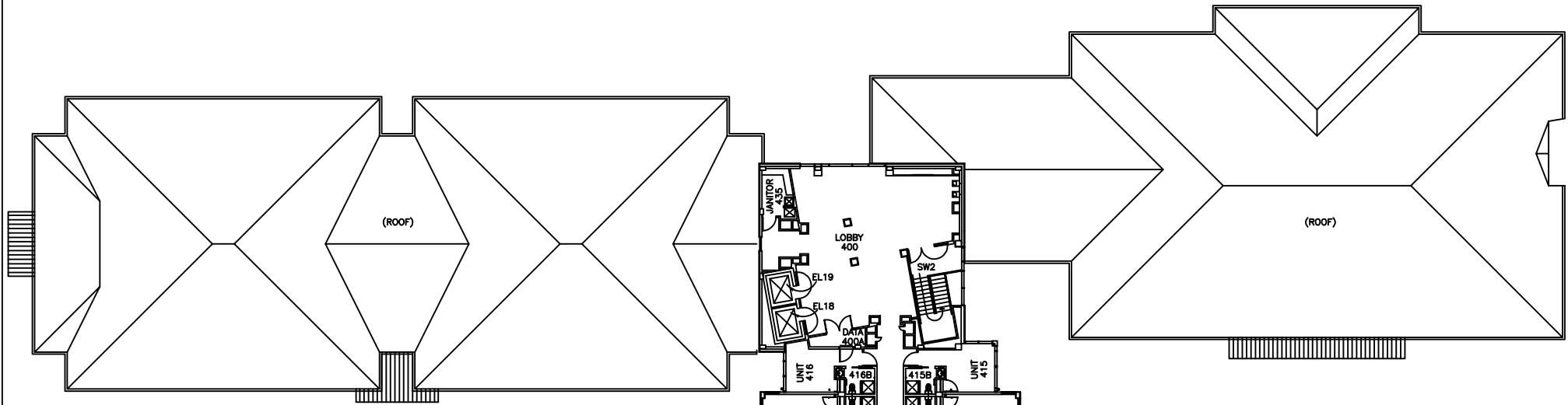
LLC

BUILDING NO.

1

PAGE NO.

A107

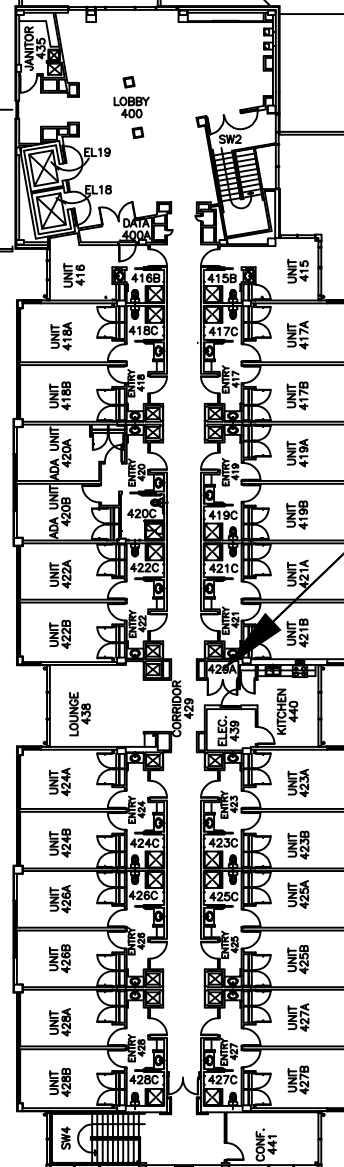
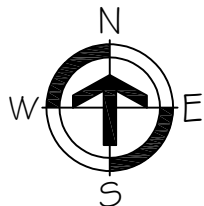


## LEGEND



ALT 4. FLOORING D

## FOURTH FLOOR PLAN



TRASH ROOM  
429A

## KEY PLAN

BLDG #1-WEST WING

BLDG #2

BLDG #1-SOUTH WING

## LIVING LEARNING FLOORING PROJECT

DEPARTMENT OF FACILITIES SERVICES

**WASHBURN  
UNIVERSITY**

1801 SW JEWELL  
TOPEKA, KANSAS

DATE: MARCH 2024

DRAWN BY: HRA

LOCATION CODE

LLC

BUILDING NO.

1

PAGE NO.

A108